

sales@thermafoam.com

ThermaFoam R-Control

NAILBASE

WALL APPLICATIONS CONSTRUCTION MANUAL

Note: Information deemed reliable at time of printing.
Please visit www.thermafoam.com for the latest information.



WALL APPLICATIONS CONSTRUCTION MANUAL

When you choose ThermaFoam R-Control Nailbase, you're collaborating with a team of experts who work with you every step of the way. We're here to answer your questions, solve your problems, and do everything we can to make sure your project proceeds smoothly—and ends successfully.

ThermaFoam R-Control products are manufactured by ThermaFoam, LLC. ThermaFoam adhere to strict, consistent standards to ensure high-quality.

ThermaFoam offers architects, designers and builders the best of both worlds: the resources of the country's largest provider of Nailbase products and systems, and the superior attention and customer service of a local supplier.

Note: Information deemed reliable at time of printing. Please visit www.thermafoam.com for the latest information. January 2021.

Table of Contents

ThermaFoam R-Control Nailbase

Details

ThermaFoam R-Control Nailbase	FC-200
General Notes	FC-200a
16 in. o.c. Frame Wall Installation	FC-201
24 in. o.c. Frame Wall Installation	FC-201a
Concrete Wall Installation	FC-201b
Exterior Top of Wall	FC-202
Exterior Top of Wall	FC-202a
Exterior Bottom of Wall	FC-203
Exterior Bottom of Wall	FC-203a
Exterior Opening Header	FC-204
Exterior Opening Sill	FC-205
Exterior Opening Jamb	FC-206
Exterior Outside Corner	FC-207
Exterior Outside Corner	FC-207a
Exterior Inside Corner	FC-208
Exterior Inside Corner	FC-208a

Technical Bulletins

Fastening to Concrete or Fully-Grouted Concrete Masonry Walls	Nailbase No. 4004
Fastening to Concrete or Masonry Walls	Nailbase No. 4005
Fastening to Concrete	Nailbase No. 4007

General Recommendations

ThermaFoam R-Control Nailbase Sizes

ThermaFoam R-Control Nailbase is made in a variety of sizes, most commonly 4' x 8'. Consult ThermaFoam for sizes, thicknesses, and fabrication services available in your area.

Environmentally Safe

The core material for ThermaFoam R-Control Nailbase, ThermaFoam R-Control insulation, contains no CFCs, HCFCs, HFCs or formaldehyde and is recyclable. ThermaFoam R-Control insulation is inert, non-nutritive and highly stable. ThermaFoam encourages you to support recycling and energy conservation.

Warranty

ThermaFoam provide a 50-year warranty covering thermal performance. Contact ThermaFoam for details regarding the warranty program.

Handling - Storage - Protection

ThermaFoam R-Control Nailbase should be stored in a fully supported manner and protected from weather. Cover stored ThermaFoam R-Control Nailbase with tarps or similar protective wraps. Exposure 1 OSB facings are used in ThermaFoam R-Control Nailbase manufacture; however, panels used for roof systems must have temporary roofing applied at the time of installation. Apply finished roofing when immediately practical.

Metal roof systems have inherent properties that may cause ThermaFoam R-Control Nailbase roofs covered with these materials to become hotter than other roof systems. When installing metal roof systems on ThermaFoam R-Control Nailbase, additional design considerations may be necessary to protect the roofing underlayment and the ThermaFoam R-Control Nailbase from excessive temperatures. These design precautions may include the use of a ventilated air space above the ThermaFoam R-Control Nailbase to minimize temperature exposure. Consult ThermaFoam for local recommendations.

Molded polystyrene contains a flame retardant additive. However, the molded polystyrene should be considered combustible and used with code approved thermal barriers and should not be stored near any open flame or source of ignition. Do not install or use molded polystyrene with coal-tar pitch or highly solvent extended mastics, adhesives or sealants. Consult ThermaFoam for suggested adhesives, sealants, and assembly specifications not otherwise detailed in this manual.

General Recommendations - cont'd

Low VOC Do-All-Ply and Splines

ThermaFoam R-Control Nailbase may be joined as needed using splines. These attachments are made with nails, staples, or screws and Low VOC Do-All-Ply.

Spline Connection and Low VOC Do-All-Ply use shall be as specified by the design professional based upon structure design, climate zone, and moisture vapor analysis.

Vapor Retarders

ThermaFoam R-Control Nailbase may require the use of a vapor retarder to ensure long term durable roof structures. Consult with a local design professional for a recommendation.

Special Treatments

ThermaFoam R-Control Nailbase can be produced with ThermaFoam R-Control insulation with borate that protects the core insulation from potential termite damage. In addition, the OSB facings can be coated with FrameGuard that protects the OSB from mold, mildew and termite damage. Please contact ThermaFoam to learn about specifications for these special treatments.

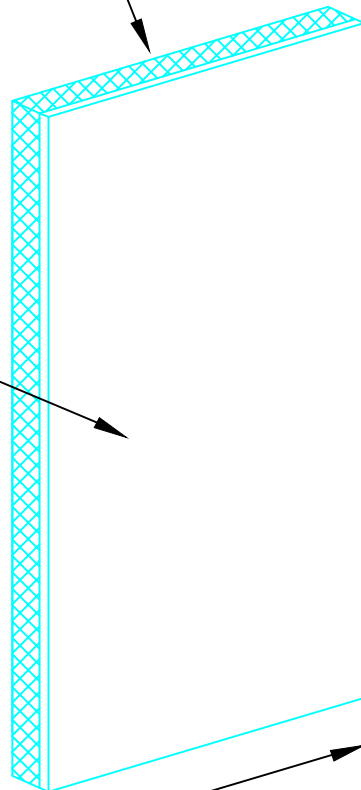


Disclaimer

Details, illustrations, pictures and guidelines provided herein give basic information and illustrate examples of ThermaFoam R-Control Nailbase installation. The basic information provided herein is not intended to cover every potential use and application of ThermaFoam R-Control Nailbase. It is the responsibility of the installer to become familiar with his specific application and determine if ThermaFoam R-Control Nailbase is suitable. By commencing work, the installer accepts full responsibility for the proper and safe installation of ThermaFoam R-Control Nailbase at his job site. Adding an insulation component may change the behavior of a roof assembly with regard to air movement, water vapor transmittance, bulk water management and heating, cooling and ventilation systems. It is the responsibility of the owner or the owner's representative to design the insulated roof assembly to perform in a manner ensuring function and durability. Furthermore, it is the sole responsibility of the installer to meet all federal and local regulatory requirements for job site safety for himself, his workers and any others on the job site while in the execution of all phases of ThermaFoam R-Control Nailbase installation.

ASTM C578 Type I
Thickness Varies

Oriented Strand Board
(OSB) DOC-PS2
EXPOSURE 1
7/16" Typical



8', 9', 10'
Length Typical

4' Width Typical

SECTION

SCALE: NTS

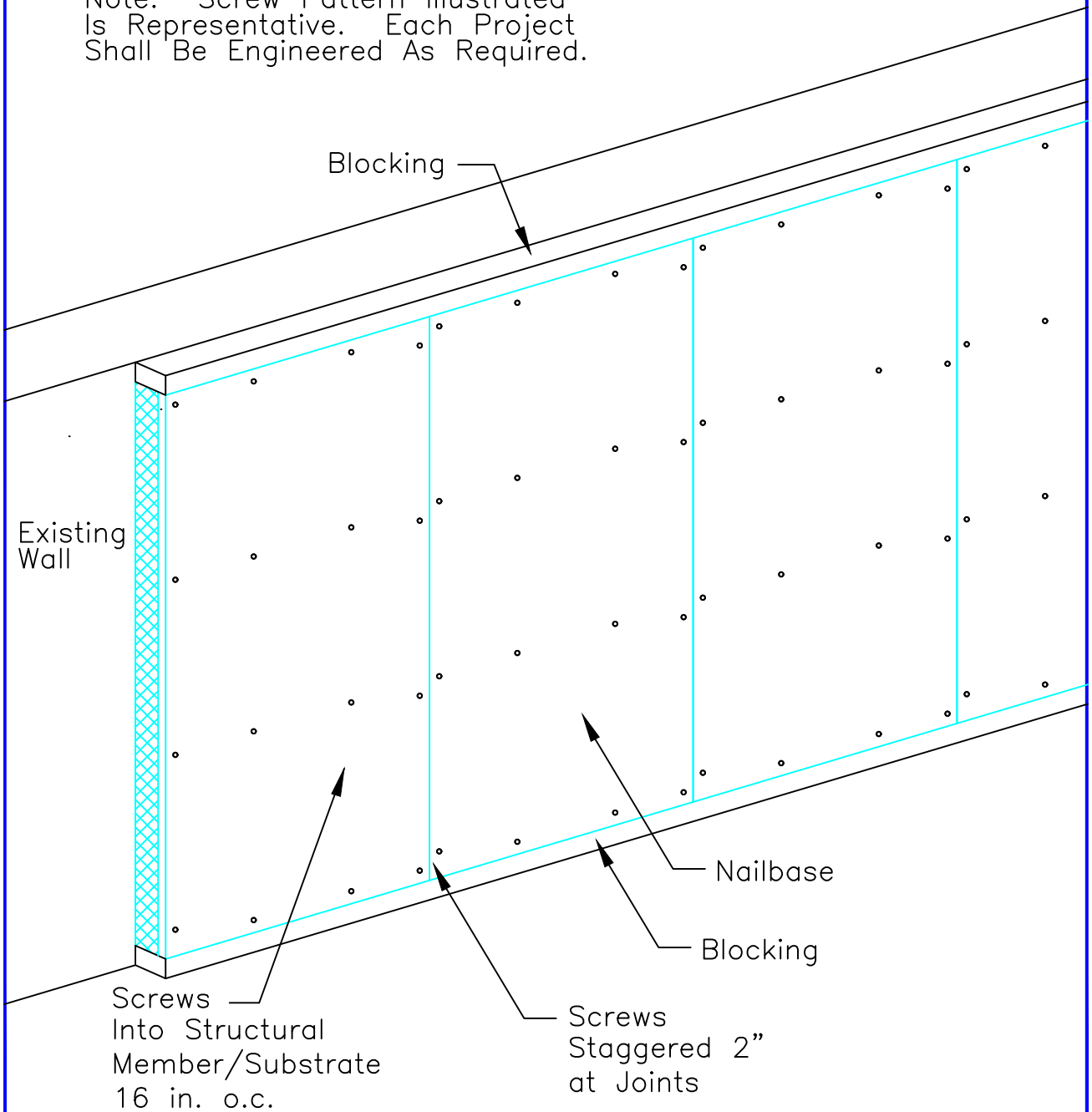
Updated 6-1-20

Nailbase

TITLE:
Nailbase

NO.
NB-200

Note: Screw Pattern Illustrated
Is Representative. Each Project
Shall Be Engineered As Required.



SECTION

SCALE: NTS

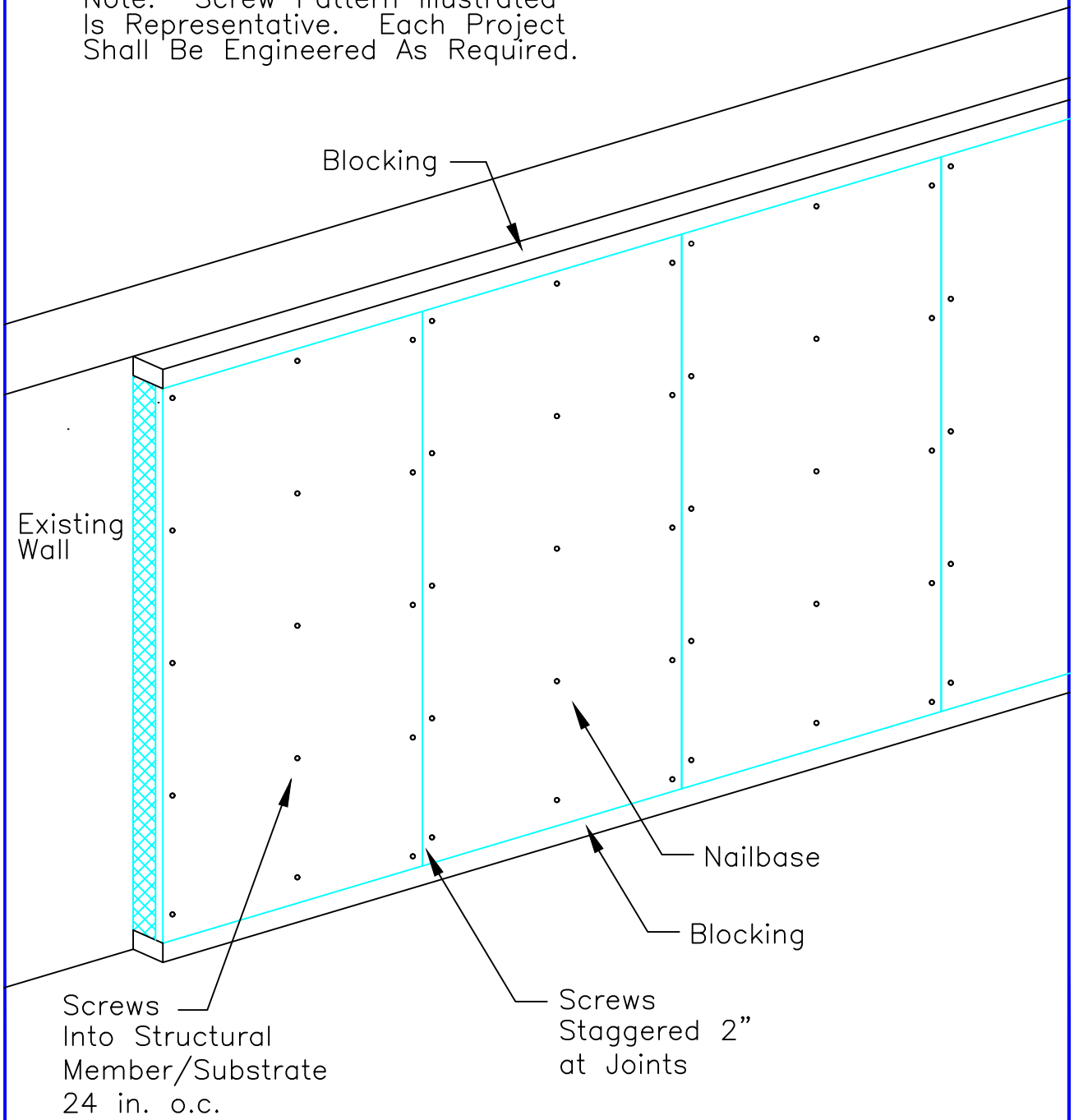
Updated 6-1-20

Nailbase

TITLE: 16 in. o.c.
FRAMED WALL INSTALLATION

NO.
NB-201

Note: Screw Pattern Illustrated
Is Representative. Each Project
Shall Be Engineered As Required.



SECTION

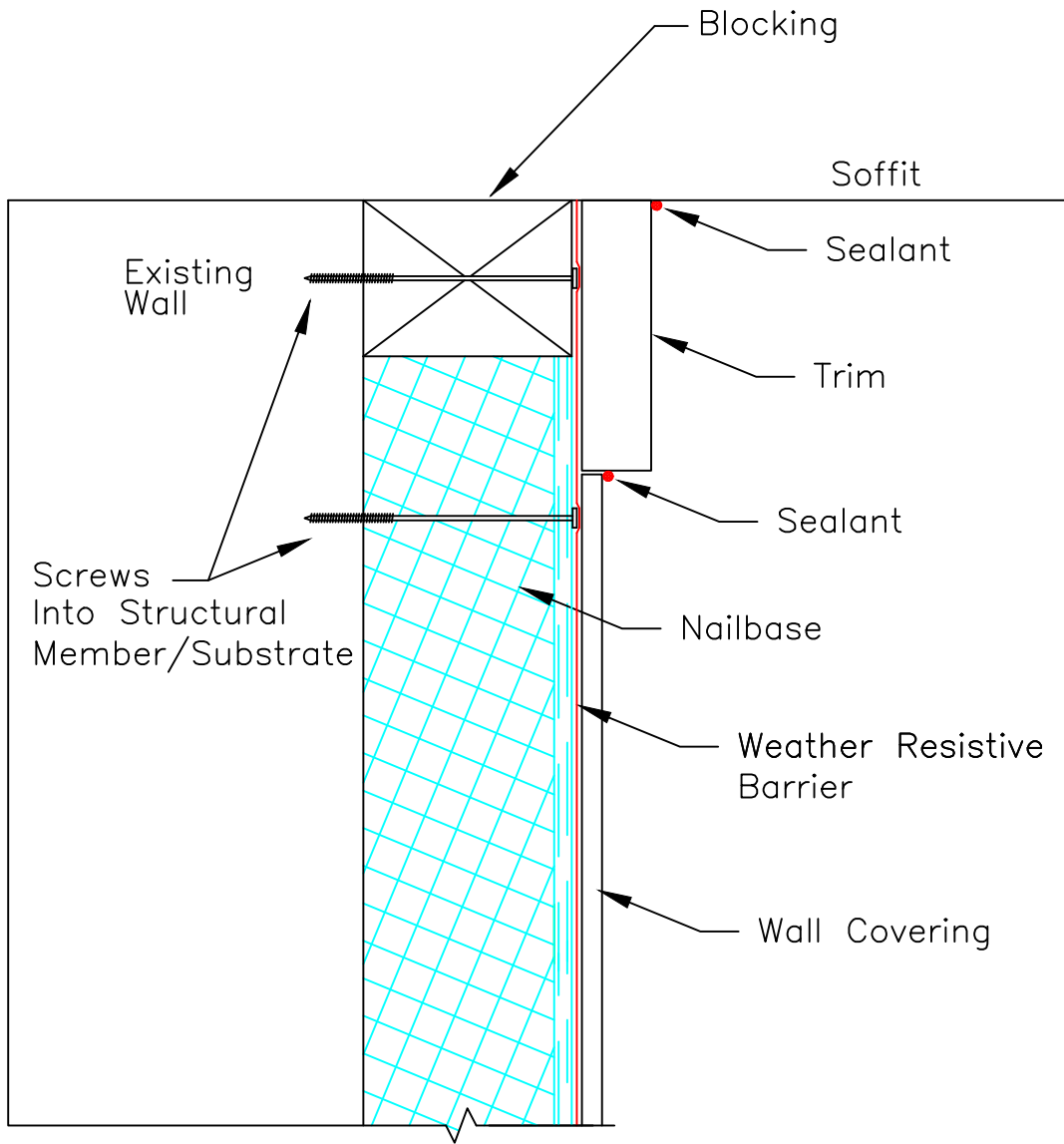
SCALE: NTS

Updated 6-1-20

Nailbase

TITLE: 24 in. o.c.
FRAMED WALL INSTALLATION

NO.
NB-201a



SECTION

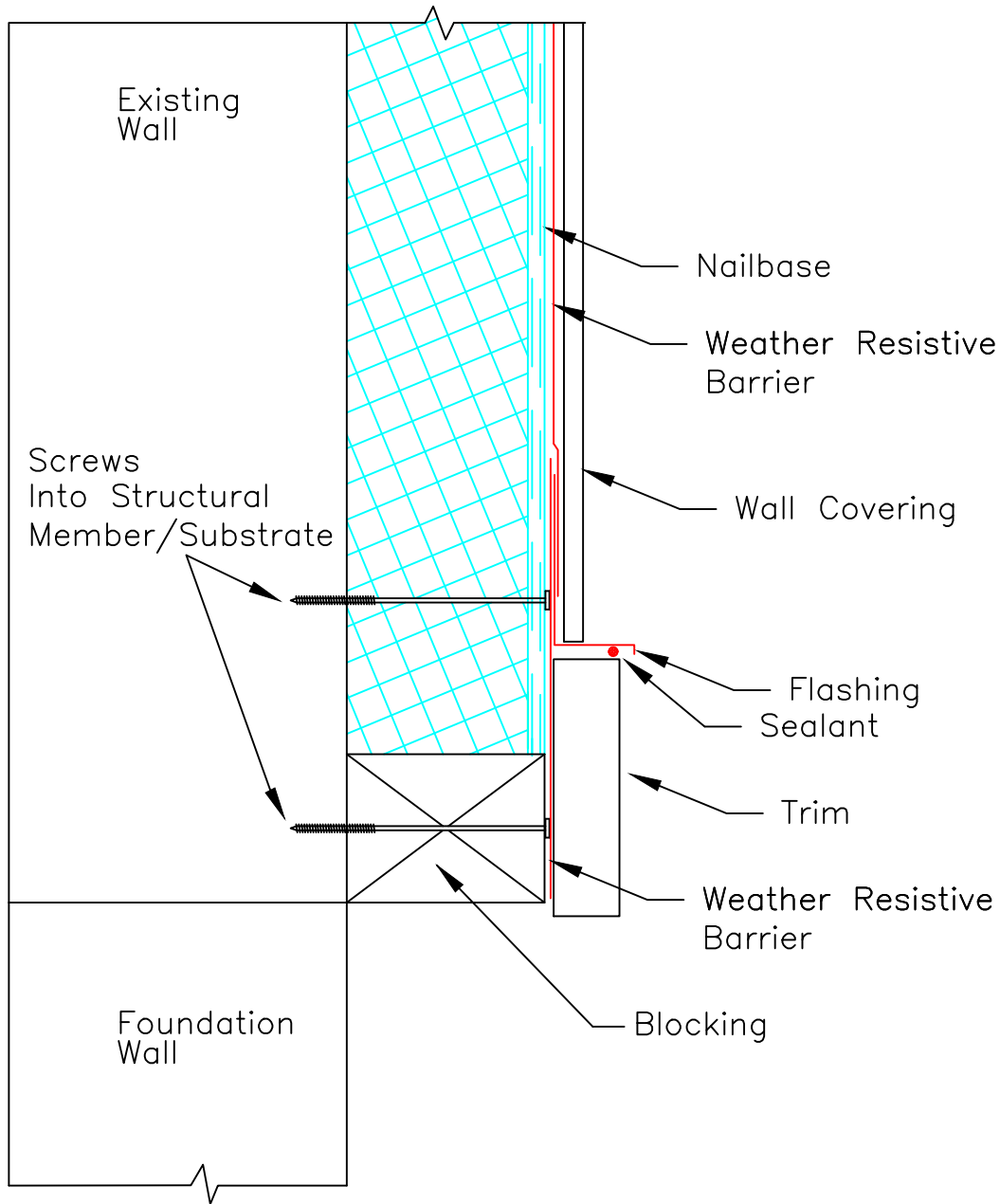
SCALE: NTS

Updated 6-1-20

Nailbase

TITLE:
EXTERIOR TOP OF WALL

NO.
NB-202



SECTION

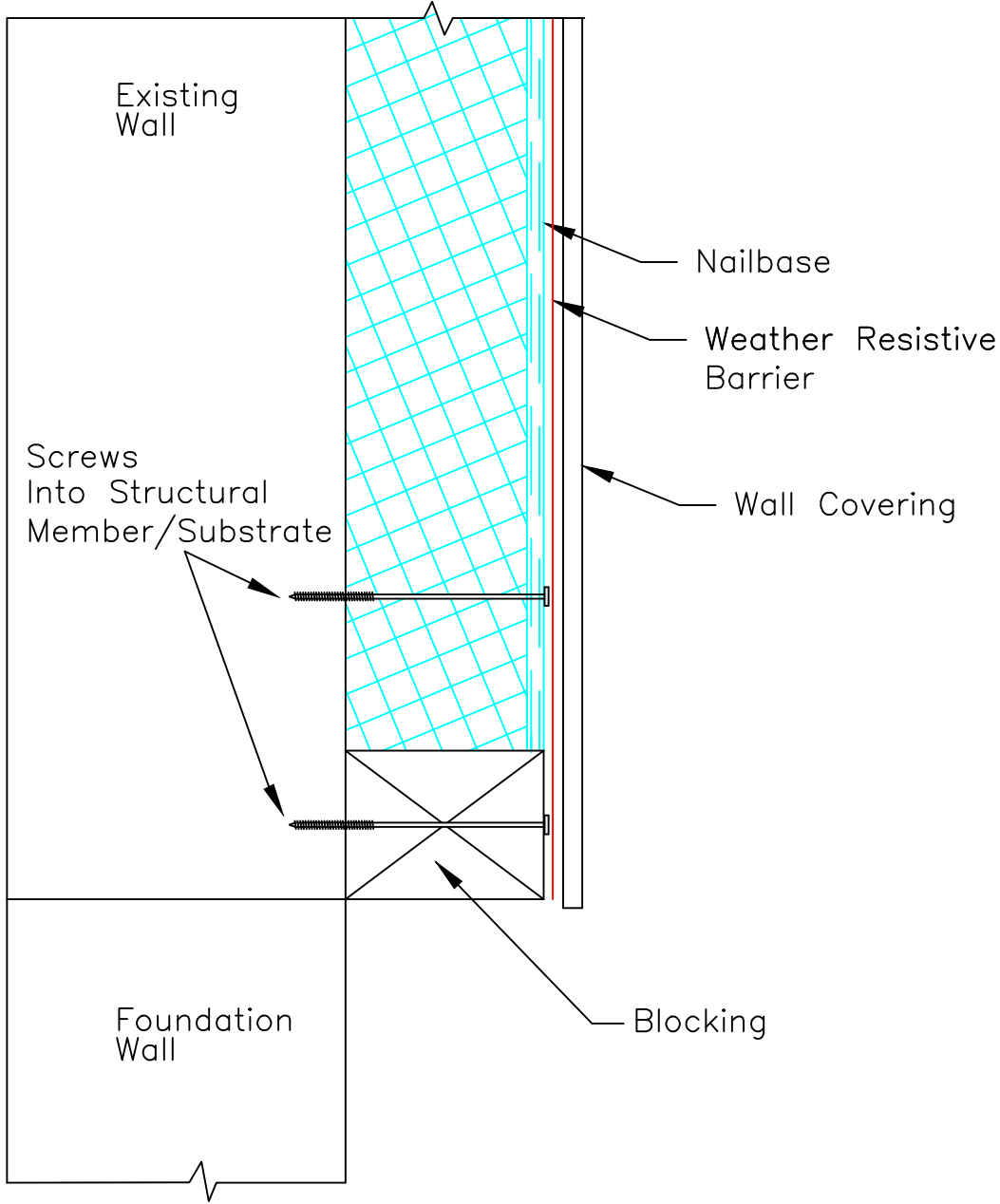
SCALE: NTS

Updated 6-1-20

Nailbase

TITLE:
EXTERIOR BOTTOM OF WALL

NO.
NB-203



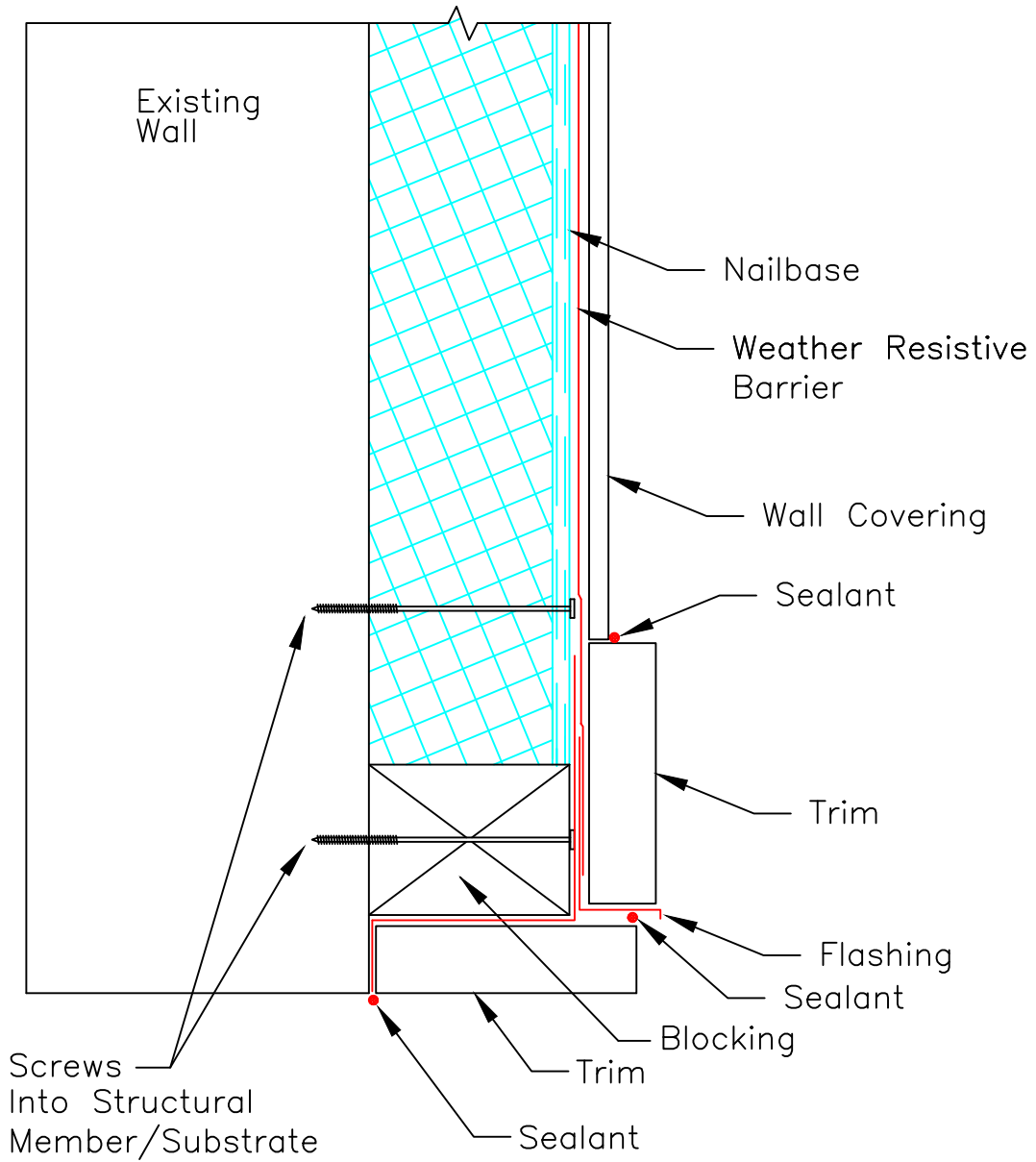
SECTION
 SCALE: NTS

Updated 6-1-20

Nailbase

TITLE:
 EXTERIOR BOTTOM OF WALL

NO.
 NB-203a



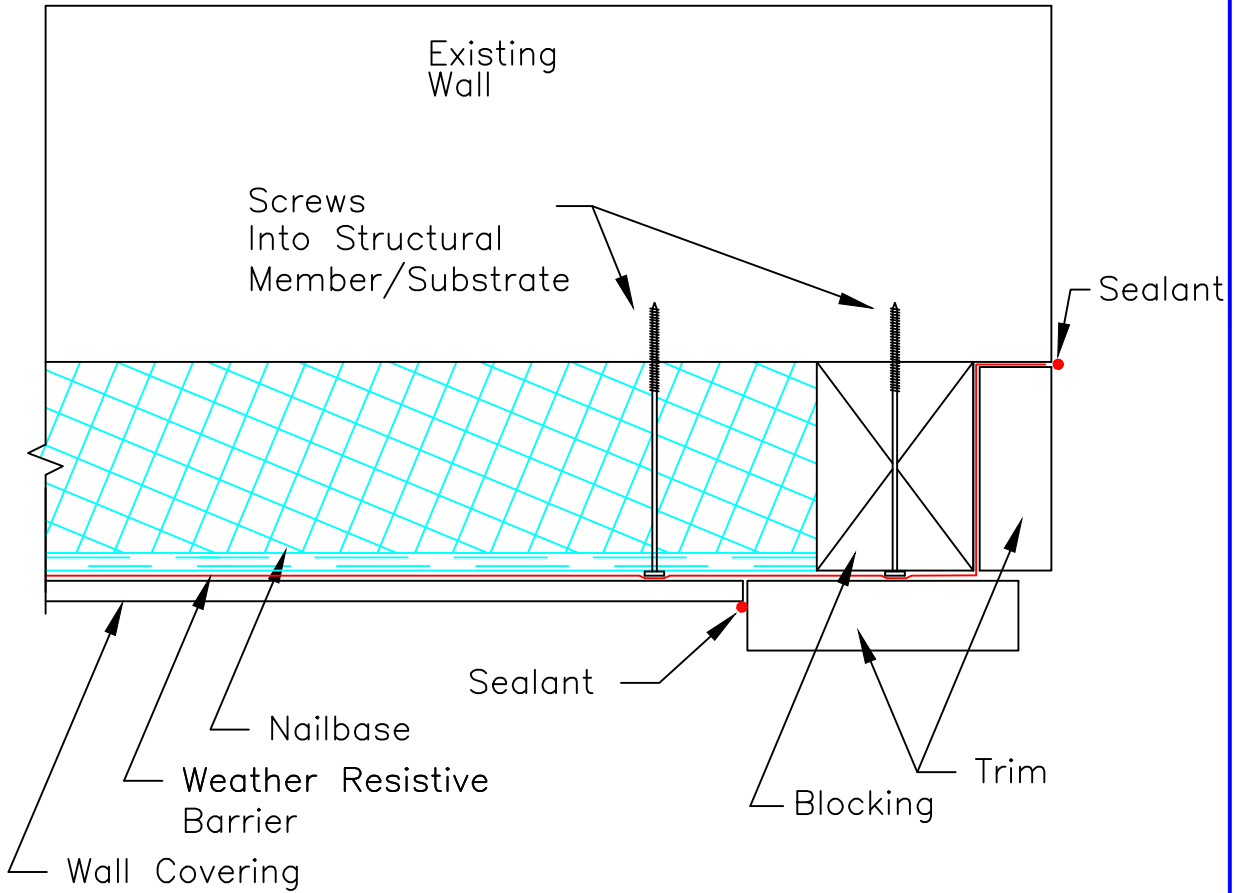
SECTION
 SCALE: NTS

Updated 6-1-20

Nailbase

TITLE:
 EXTERIOR OPENING HEADER

NO.
 NB-204



SECTION

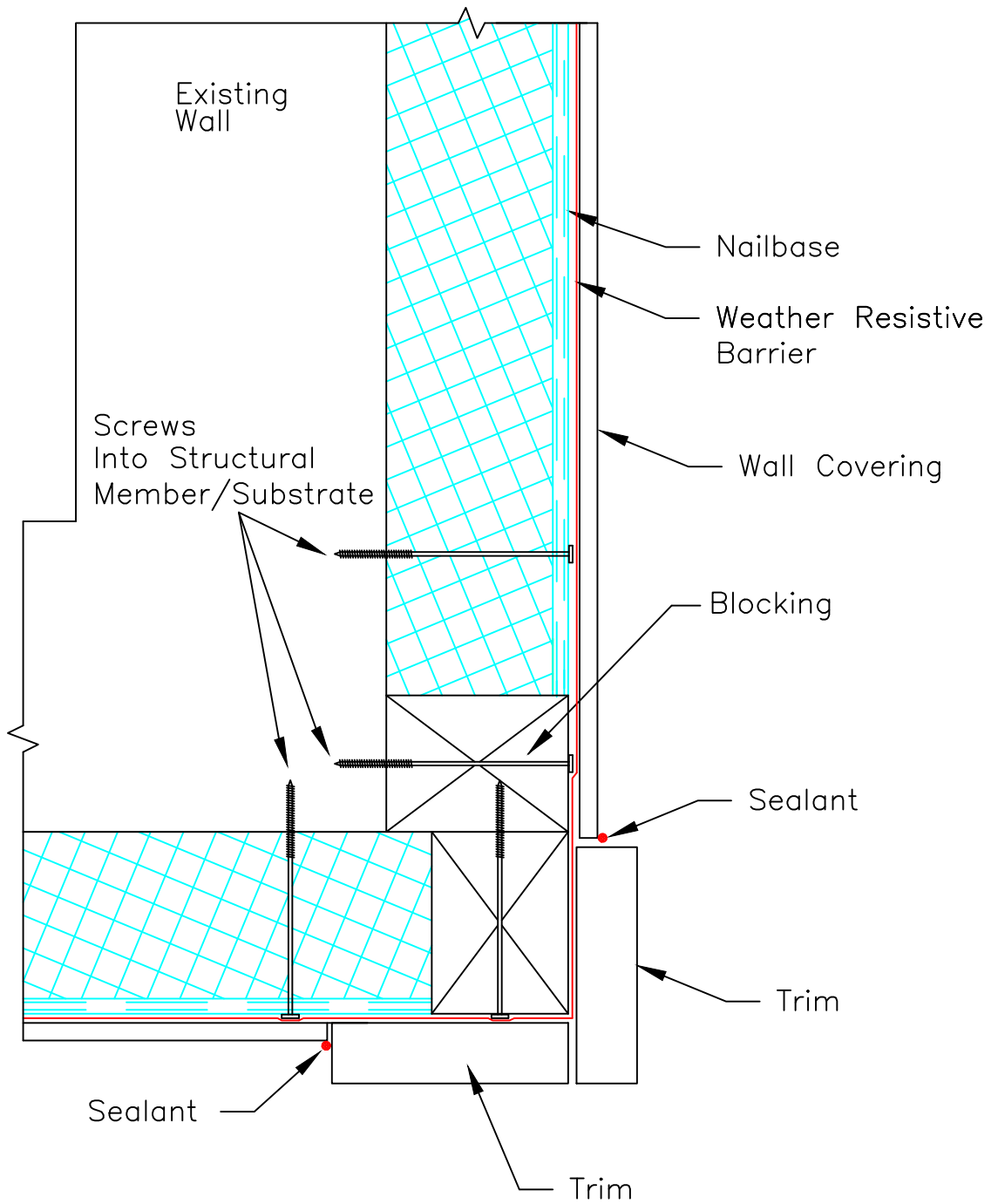
SCALE: NTS

Updated 6-1-20

Nailbase

TITLE:
EXTERIOR OPENING JAMB

NO.
NB-206



SECTION

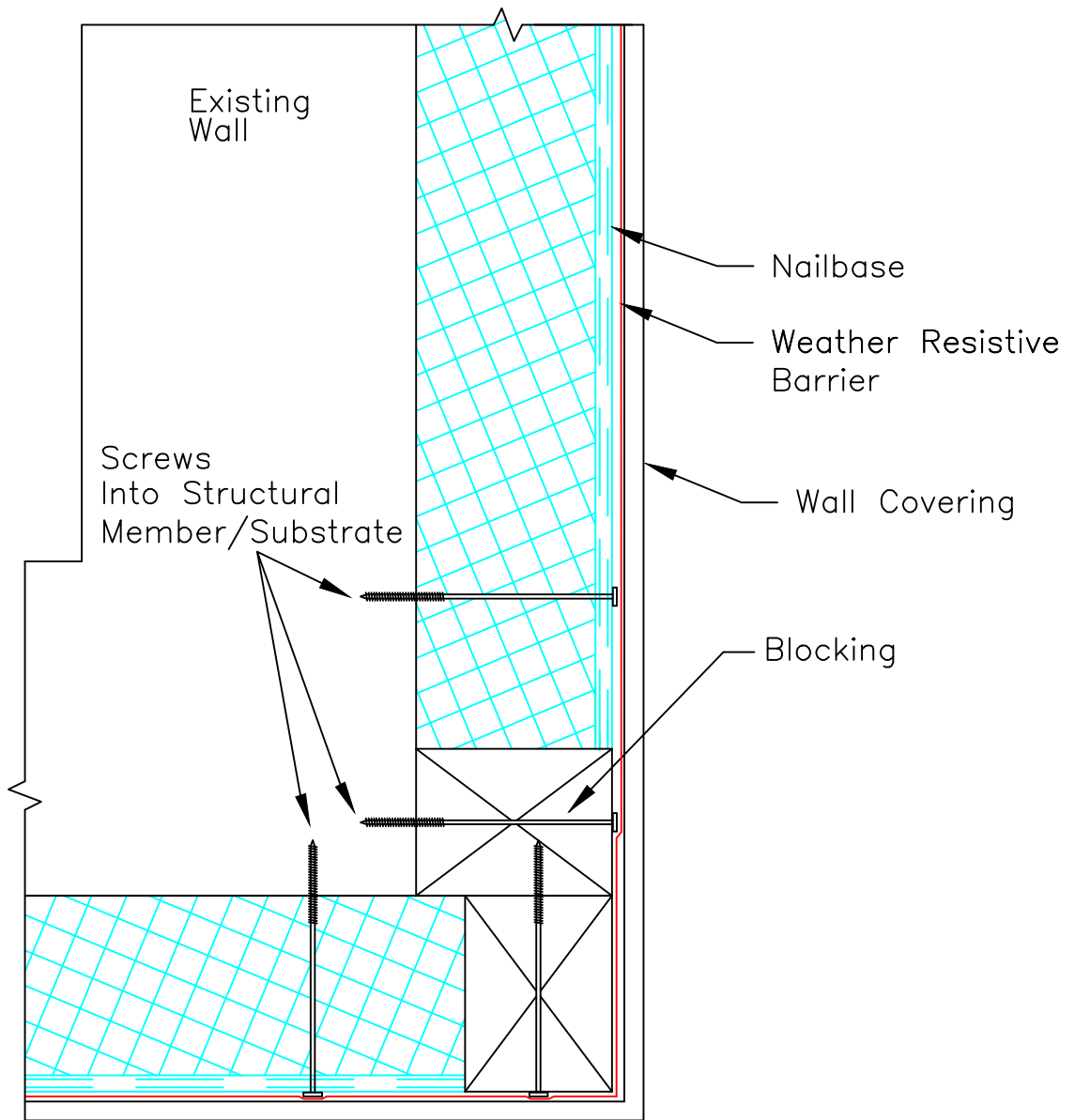
SCALE: NTS

Updated 6-1-20

Nailbase

TITLE:
EXTERIOR OUTSIDE CORNER

NO.
NB-207



SECTION

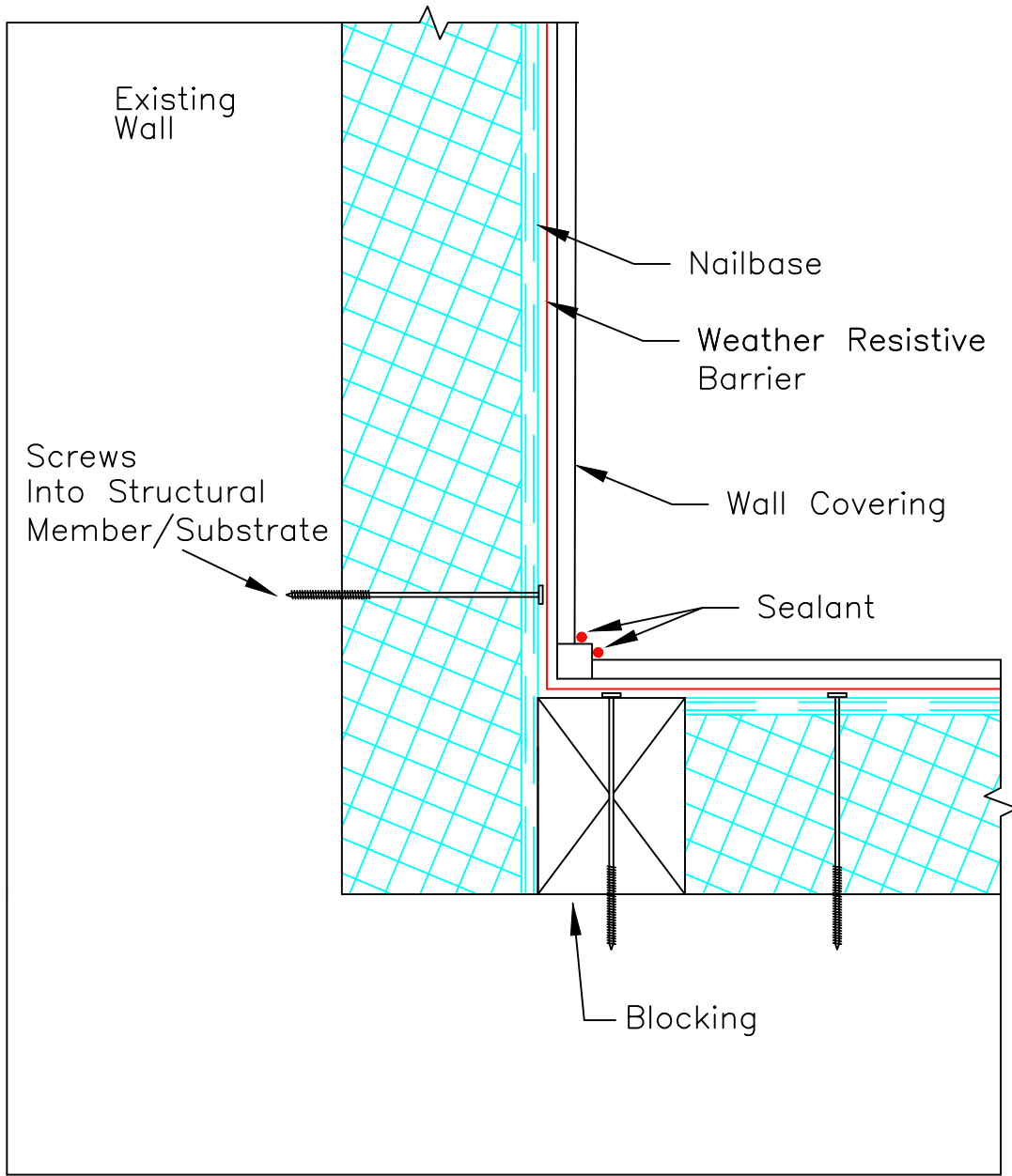
SCALE: NTS

Updated 6-1-20

Nailbase

TITLE:
EXTERIOR OUTSIDE CORNER

NO.
NB-207a



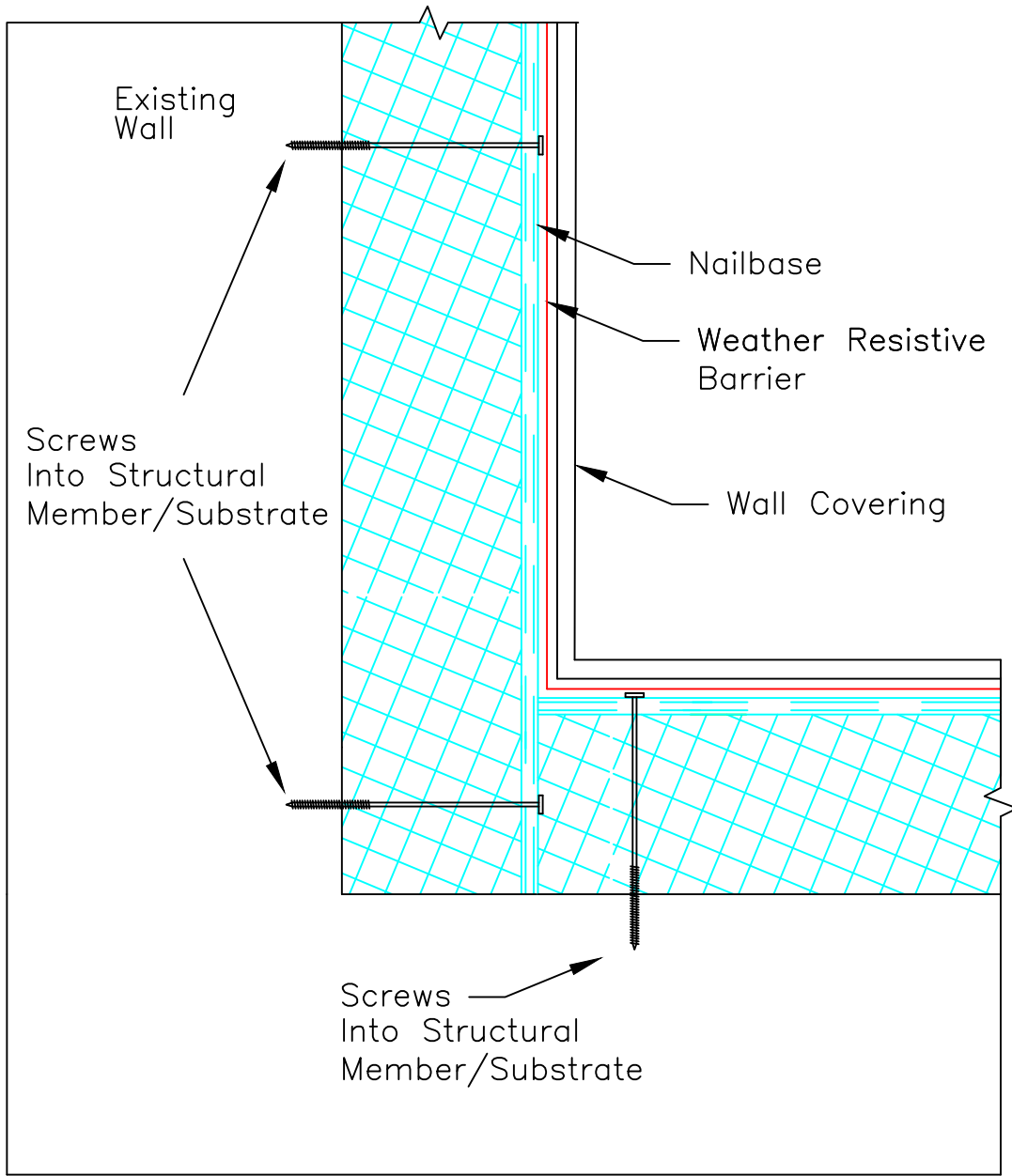
SECTION
 SCALE: NTS

Updated 6-1-20

Nailbase

TITLE:
 EXTERIOR INSIDE CORNER

NO.
 NB-208



SECTION

SCALE: NTS

Updated 6-1-20

Nailbase

TITLE:
EXTERIOR INSIDE CORNER

NO.
NB-208a

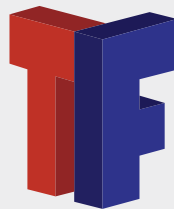
Product Availability and Support.

R-Control Nailbase is supported by a team of experts who work with you to answer your questions, offer solutions, and do everything they can to make sure your project goes smoothly and ends successfully.

Ready to take control? Start here.

If you're ready to have R-Control Nailbase contribute to your next project, just contact your ThermaFoam Technical Sales Representative. We will be happy to give you design consultation, information about R-Control Nailbase products, pricing, and answers to all of your questions.

NEED INFORMATION OR A QUOTE



sales@thermafoam.com
www.thermafoam.com



1240 Hwy 77
Hillsboro, TX 76645

Office: 254-582-2730
Fax: 254-582-2811