

sales@thermafoam.com

ThermaFoam R-Control

NAILSTRIP

WALL APPLICATIONS CONSTRUCTION MANUAL

Note: Information deemed reliable at time of printing.
Please visit www.thermafoam.com for the latest information.



WALL APPLICATIONS CONSTRUCTION MANUAL

When you choose ThermaFoam R-Control Nailbase, you're collaborating with a team of experts who work with you every step of the way. We're here to answer your questions, solve your problems, and do everything we can to make sure your project proceeds smoothly—and ends successfully.

ThermaFoam R-Control products are manufactured by ThermaFoam, LLC. ThermaFoam adheres to strict, consistent standards to ensure high-quality.

ThermaFoam offers architects, designers and builders the best of both worlds: the resources of the country's largest provider of Nailbase products and systems, and the superior attention and customer service of a local supplier.

Note: Information deemed reliable at time of printing. Please visit www.thermafoam.com for the latest information. January 2021.

Table of Contents

ThermaFoam R-Control Nailstrip

Details

General

ThermaFoam R-Control Nailstrip	FC-300
General Notes	FC-300a
Vertical Installation	FC-301
Horizontal Installation	FC-301a
Optional Electrical Chases	FC-302
Electrical Box	FC-303

Interior

Interior Top of Wall	FC-402
Interior Top of Wall	FC-402a
Interior Bottom of Wall	FC-403
Interior Opening Header	FC-404
Interior Opening Sill	FC-405
Interior Opening Jamb	FC-406
Interior Outside Corner	FC-407
Interior Inside Corner	FC-408

Exterior

Exterior Top of Wall	FC-502
Exterior Top of Wall	FC-502a
Exterior Bottom of Wall	FC-503
Exterior Bottom of Wall	FC-503a
Exterior Opening Header	FC-504
Exterior Opening Sill	FC-505
Exterior Opening Jamb	FC-506
Exterior Outside Corner	FC-507
Exterior Outside Corner	FC-507a
Exterior Inside Corner	FC-508
Exterior Inside Corner	FC-508a

Technical Bulletins

Substrate Preparation and Installation	Nailstrip No. 8001
Rainscreens	Nailstrip No. 8002

General Recommendations

ThermaFoam R-Control Nailstrip Sizes

ThermaFoam R-Control Nailstrip is made in a variety of sizes, most commonly 4' x 8'. Consult ThermaFoam for sizes, thicknesses, and fabrication services available in your area.

Environmentally Safe

The core material for ThermaFoam R-Control Nailstrip, ThermaFoam R-Control insulation, contains no CFCs, HCFCs, HFCs or formaldehyde and is recyclable. ThermaFoam R-Control insulation is inert, non-nutritive and highly stable. ThermaFoam encourages you to support recycling and energy conservation.

Warranty

ThermaFoam provides a 50-year warranty covering thermal performance. Contact ThermaFoam for details regarding the warranty program.

Handling - Storage - Protection

ThermaFoam R-Control Nailstrip should be stored in a fully supported manner and protected from weather. Cover stored ThermaFoam R-Control Nailstrip with tarps or similar protective wraps. Exposure 1 OSB facings are used in ThermaFoam R-Control Nailstrip manufacture; however, exterior wall installations must be covered by a code recognized weather resistive barrier applied at the time of installation. Apply wall cladding when immediately practical.

Molded polystyrene contains a flame retardant additive. However, the molded polystyrene should be considered combustible and used with code approved thermal barriers and should not be stored near any open flame or source of ignition. Do not install or use molded polystyrene with coal-tar pitch or highly solvent extended mastics, adhesives or sealants. Consult ThermaFoam for suggested adhesives, sealants, and assembly specifications not otherwise detailed in this manual.

General Recommendations - cont'd

Vapor Retarders

ThermaFoam R-Control Nailstrip may require the use of a vapor retarder. Consult with a local design professional for a recommendation.

Special Treatments

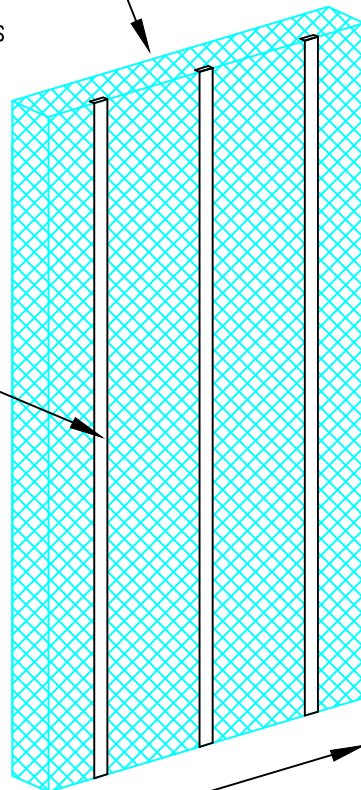
ThermaFoam R-Control Nailstrip can be produced with ThermaFoam R-Control insulation with borate that protects the core insulation from potential termite damage. Please contact ThermaFoam.

Disclaimer

Details, illustrations, pictures and guidelines provided herein give basic information and illustrate examples of ThermaFoam R-Control Nailstrip installation. The basic information provided herein is not intended to cover every potential use and application of ThermaFoam R-Control Nailstrip. It is the responsibility of the installer to become familiar with his specific application and determine if ThermaFoam R-Control Nailstrip is suitable. By commencing work, the installer accepts full responsibility for the proper and safe installation of ThermaFoam R-Control Nailstrip at his job site. Adding an insulation component may change the behavior of a wall assembly with regard to air movement, water vapor transmittance, bulk water management and heating, cooling and ventilation systems. It is the responsibility of the owner or the owner's representative to design the insulated wall assembly to perform in a manner ensuring function and durability. Furthermore, it is the sole responsibility of the installer to meet all federal and local regulatory requirements for job site safety for himself, his workers and any others on the job site while in the execution of all phases of ThermaFoam R-Control Nailstrip installation.

ASTM C578 Type I
ICC-ES ESR-1006
Thickness Varies

2" Wide Strips of 7/16"
Oriented Strand Board
(OSB) DOC-PS2
EXPOSURE 1
16" o.c. Typical



8', 9', 10'
Length Typical

4' Width Typical

ISOMETRIC

SCALE: NTS

Updated 6-1-20

Nailstrip

TITLE:
Nailstrip

NO.
NS-300

General Notes

1. Provide adequate support for Nailstrip during storage.
2. Store Nailstrip flat and protected from weather.
3. Exterior applications:
Nailstrip must be covered with code recognized weather resistive barrier at time of installation. Apply wall covering to Nailstrip following wall covering manufacturer recommendations. Fasten trim to Nailstrip or wood blocking as required.
4. Interior applications:
Nailstrip must be covered with code approved thermal barrier. Fasten thermal barrier to Nailstrip or wood blocking as required.
5. Attachment of Nailstrip shall be with screws into structural members/substrate.
6. Each project shall be engineered as required.
7. Details provided are illustrative examples of Nailstrip installation and not intended to cover every potential use and application.

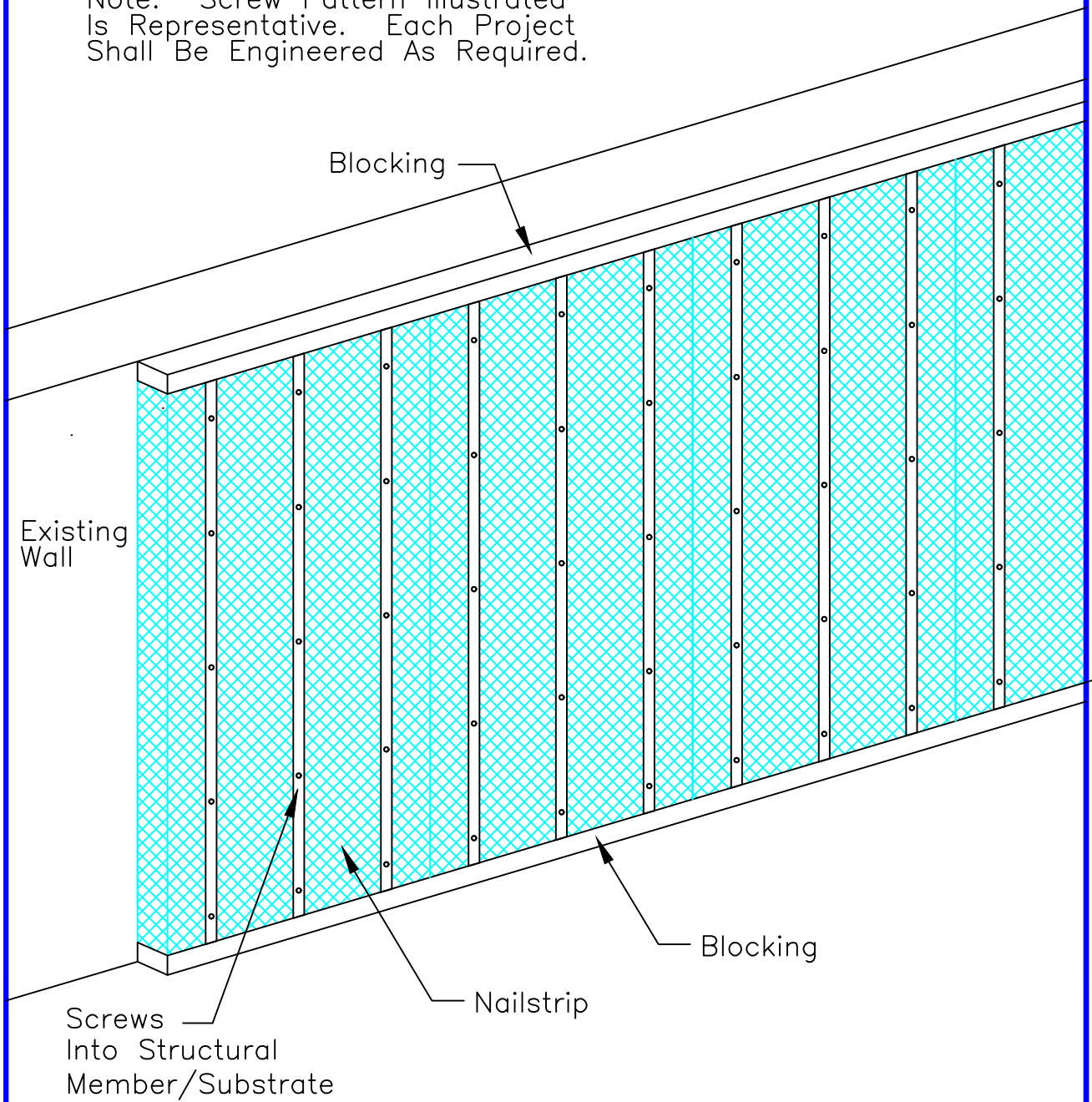
Updated 6-1-20

Nailstrip

TITLE:
GENERAL NOTES

NO.
NS-300a

Note: Screw Pattern Illustrated
Is Representative. Each Project
Shall Be Engineered As Required.



ISOMETRIC

SCALE: NTS

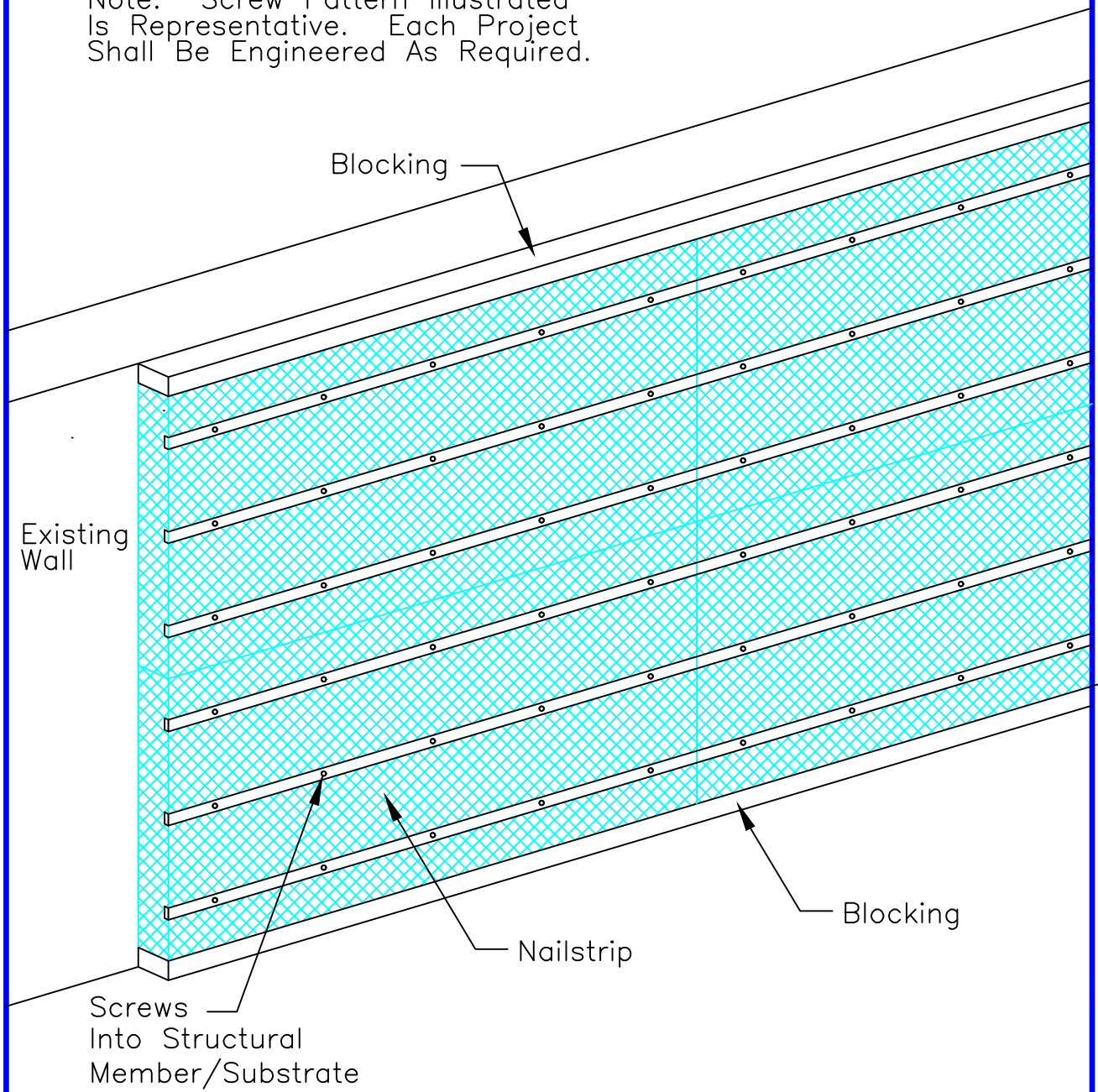
Updated 6-1-20

Nailstrip

TITLE:
VERTICAL INSTALLATION

NO.
NS-301

Note: Screw Pattern Illustrated
Is Representative. Each Project
Shall Be Engineered As Required.



ISOMETRIC

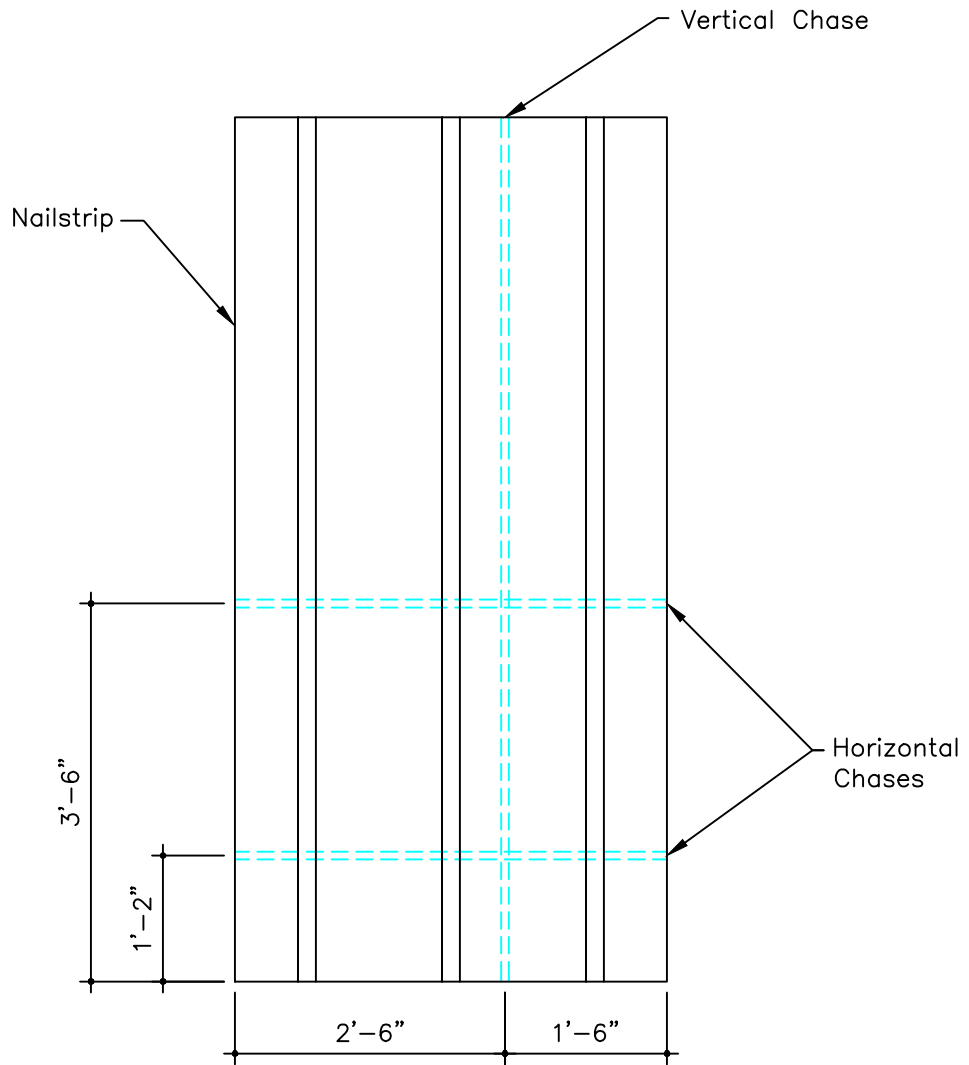
SCALE: NTS

Updated 6-1-20

Nailstrip

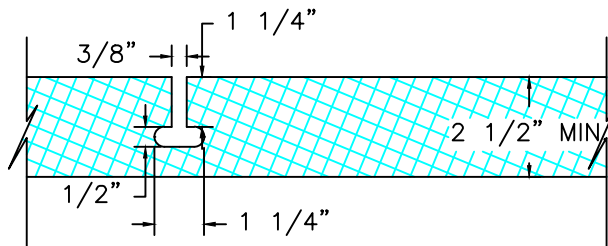
TITLE:
HORIZONTAL INSTALLATION

NO.
NS-301a



ELEVATION

SCALE: NTS



SECTION

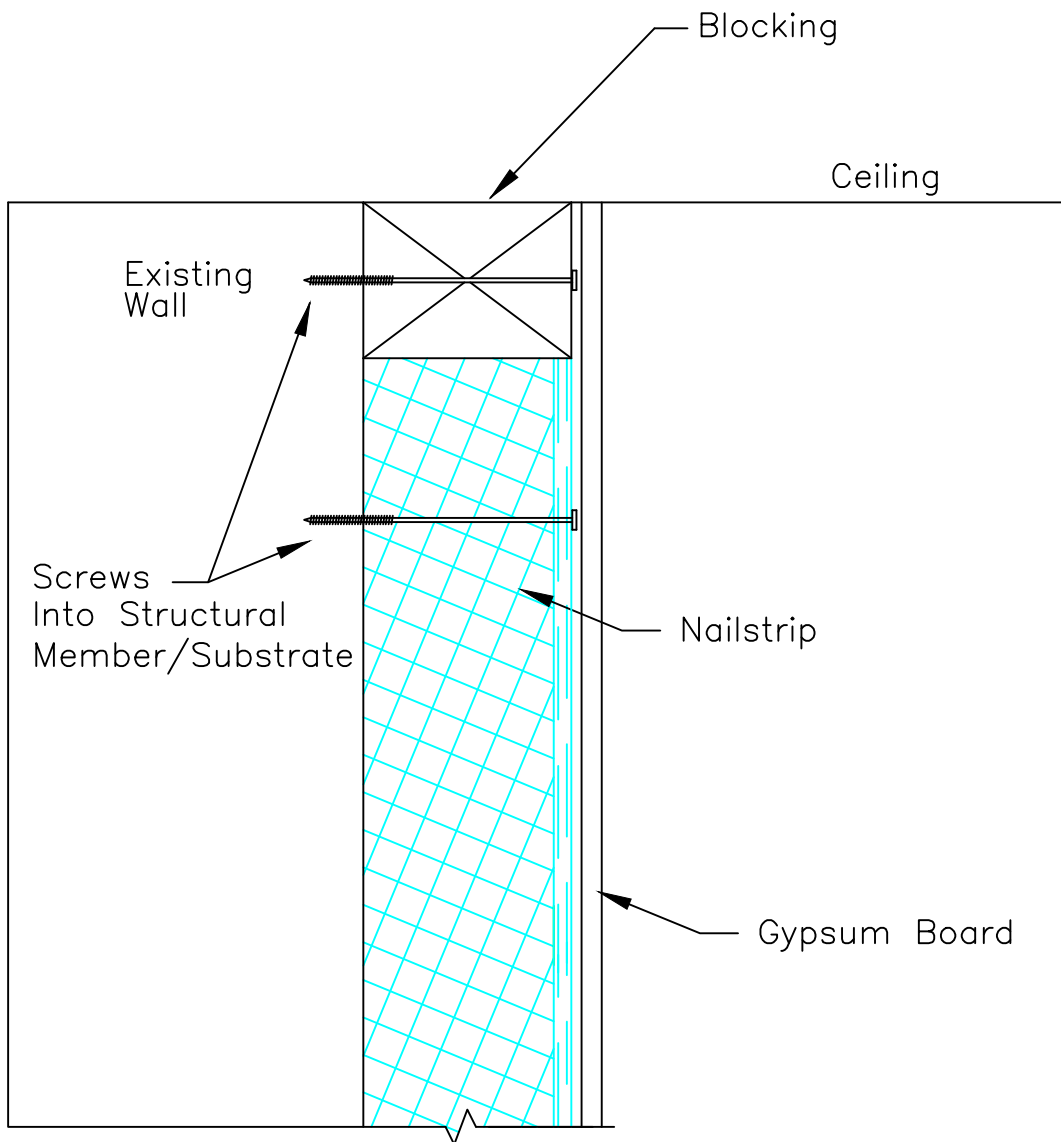
SCALE: NTS

Updated 6-1-20

Nailstrip

TITLE:
OPTIONAL ELECTRICAL CHASES

NO.
NS-302



SECTION

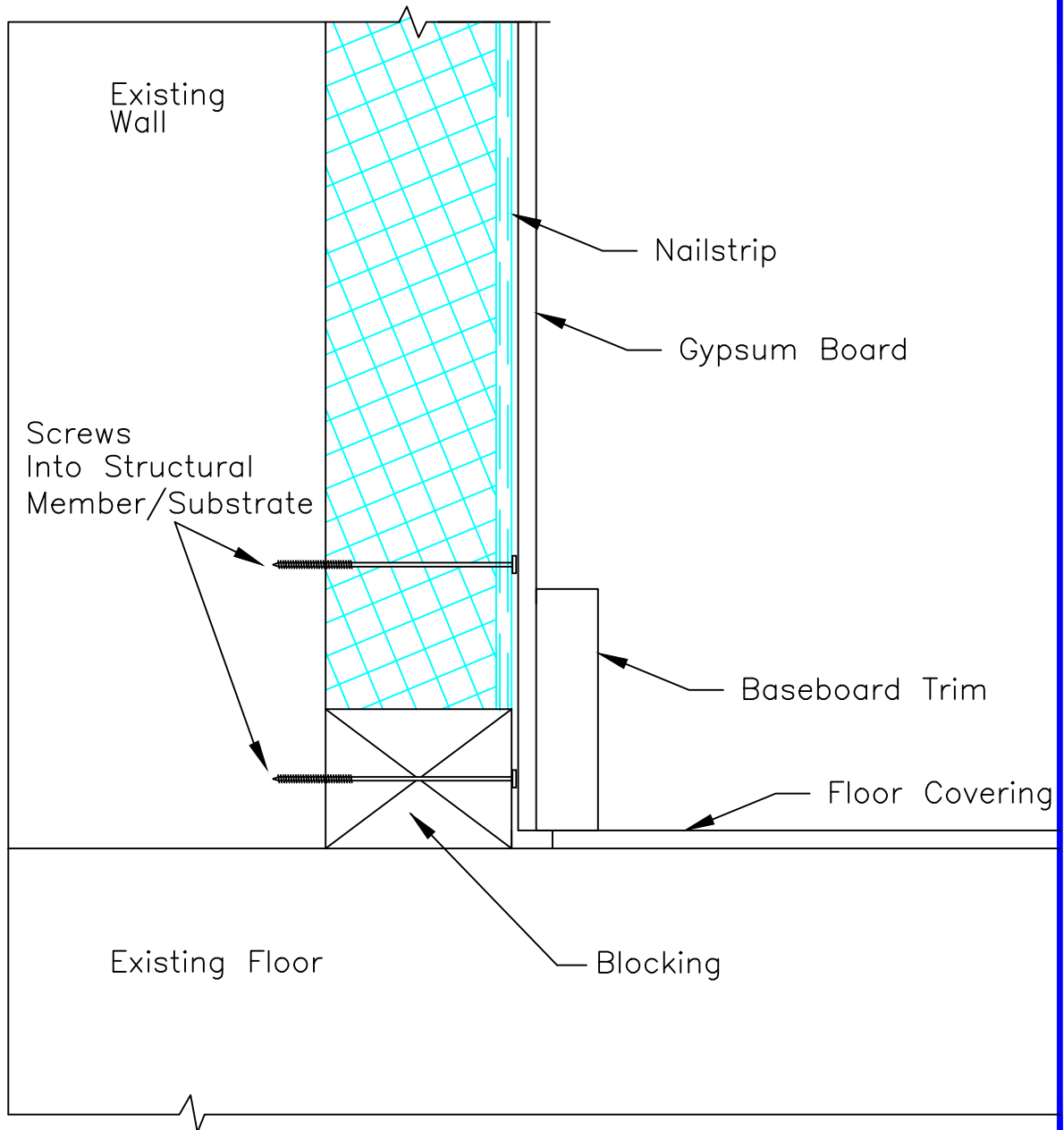
SCALE: NTS

Updated 6-1-20

Nailstrip

TITLE:
INTERIOR TOP OF WALL

NO.
NS-402a



SECTION

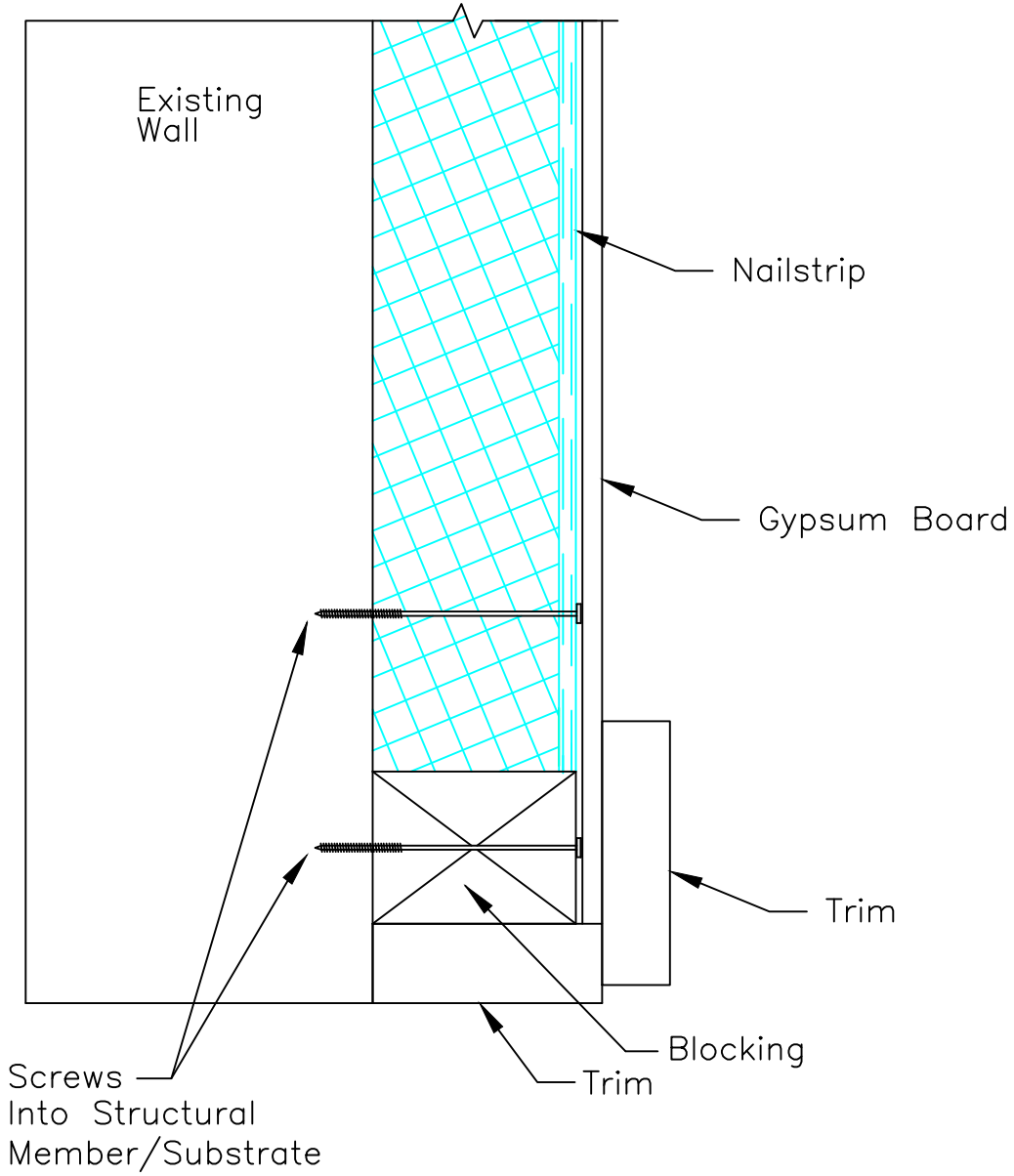
SCALE: NTS

Updated 6-1-20

Nailstrip

TITLE:
INTERIOR BOTTOM OF WALL

NO.
NS-403



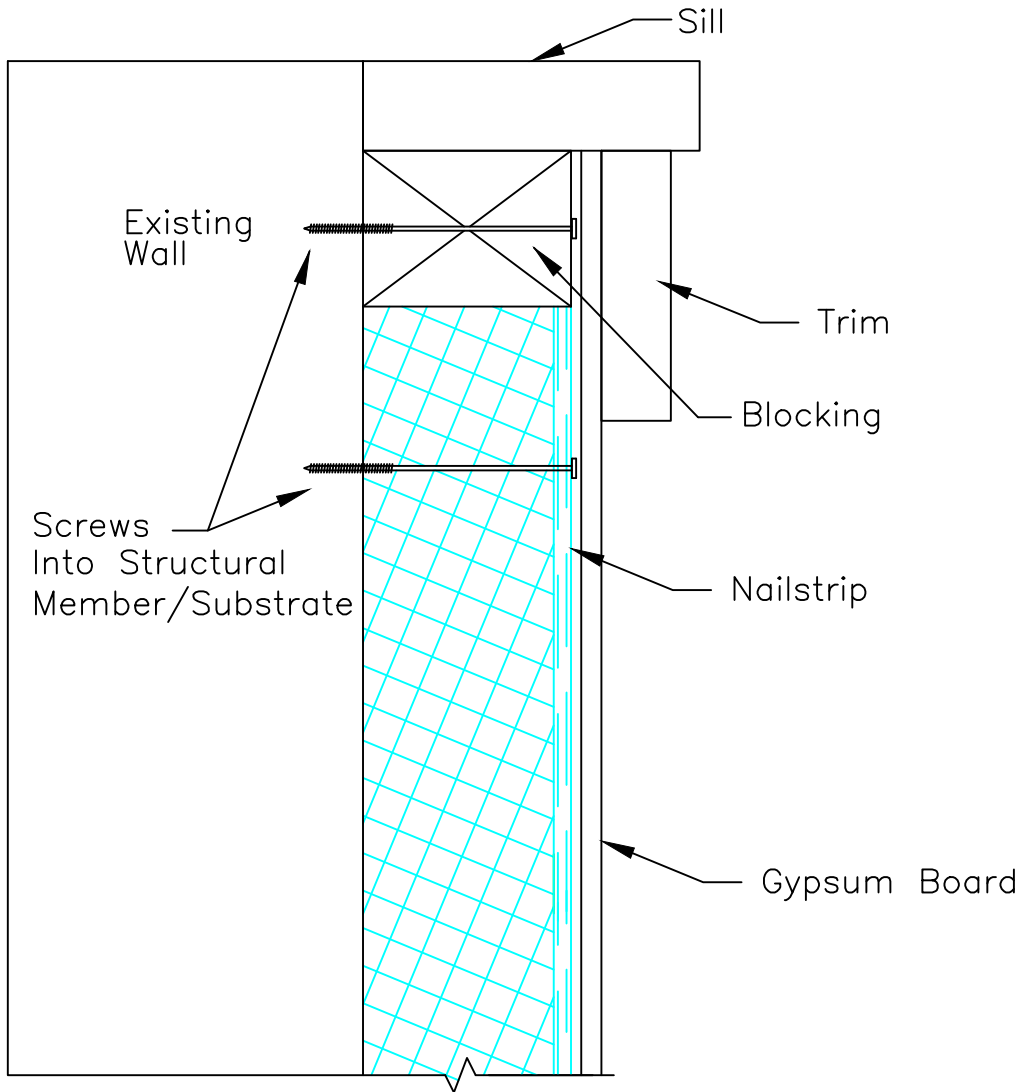
SECTION

SCALE: NTS

Updated 6-1-20

Nailstrip

TITLE: INTERIOR OPENING HEADER	NO. NS-404
-----------------------------------	---------------



SECTION

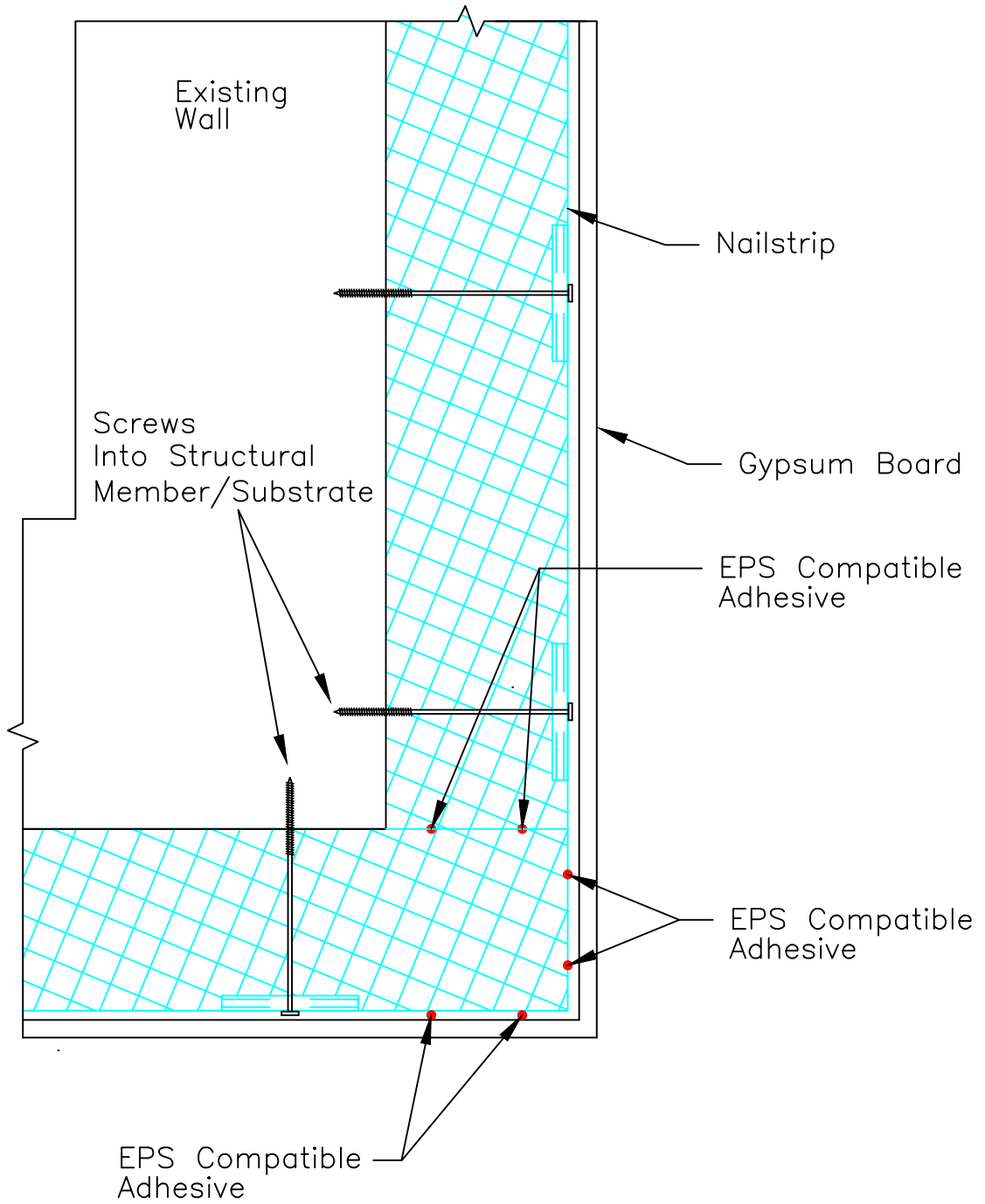
SCALE: NTS

Updated 6-1-20

Nailstrip

TITLE:
INTERIOR OPENING SILL

NO.
NS-405



SECTION

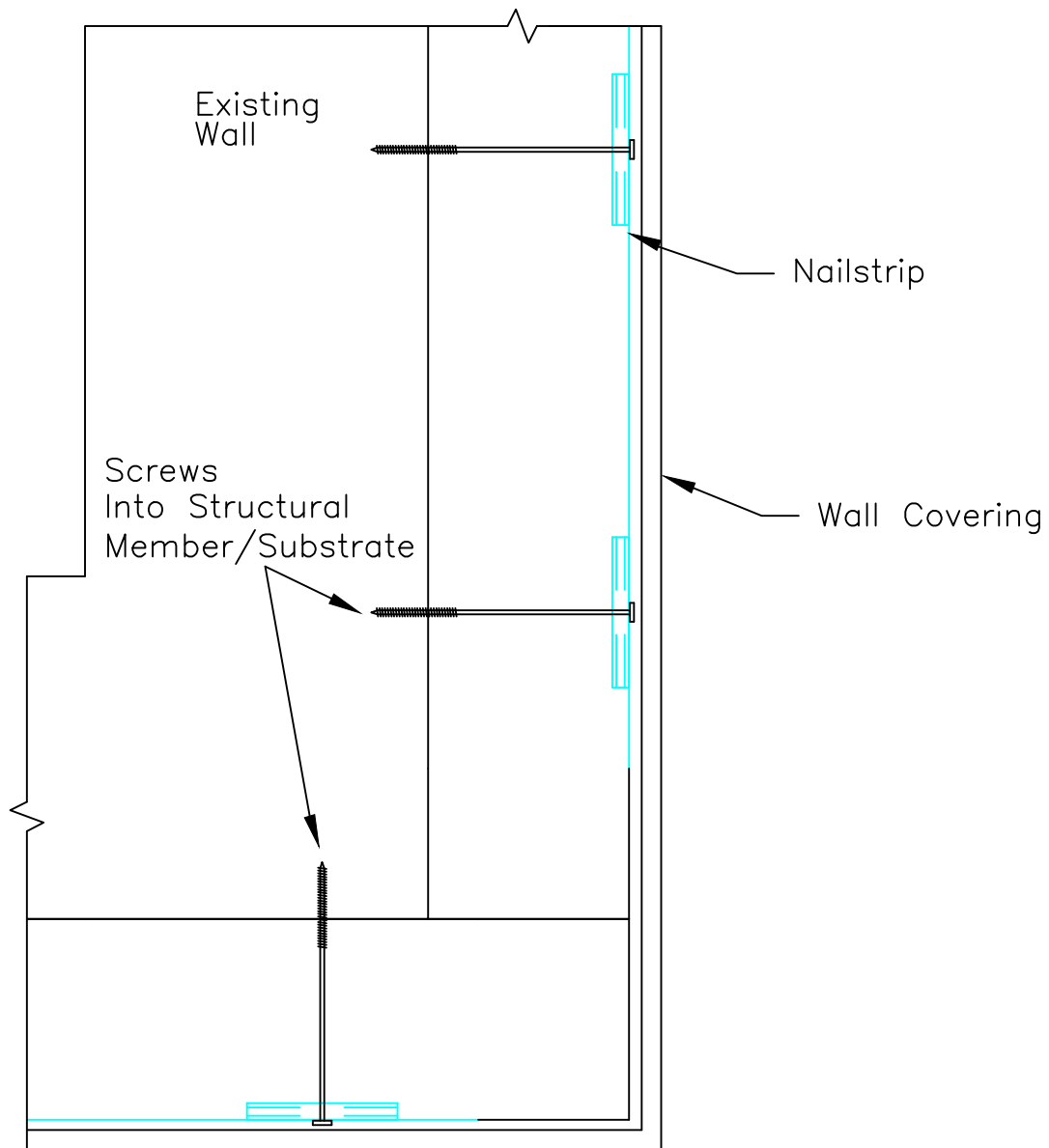
SCALE: NTS

Updated 6-1-20

Nailstrip

TITLE:
INTERIOR OUTSIDE CORNER

NO.
NS-407



SECTION

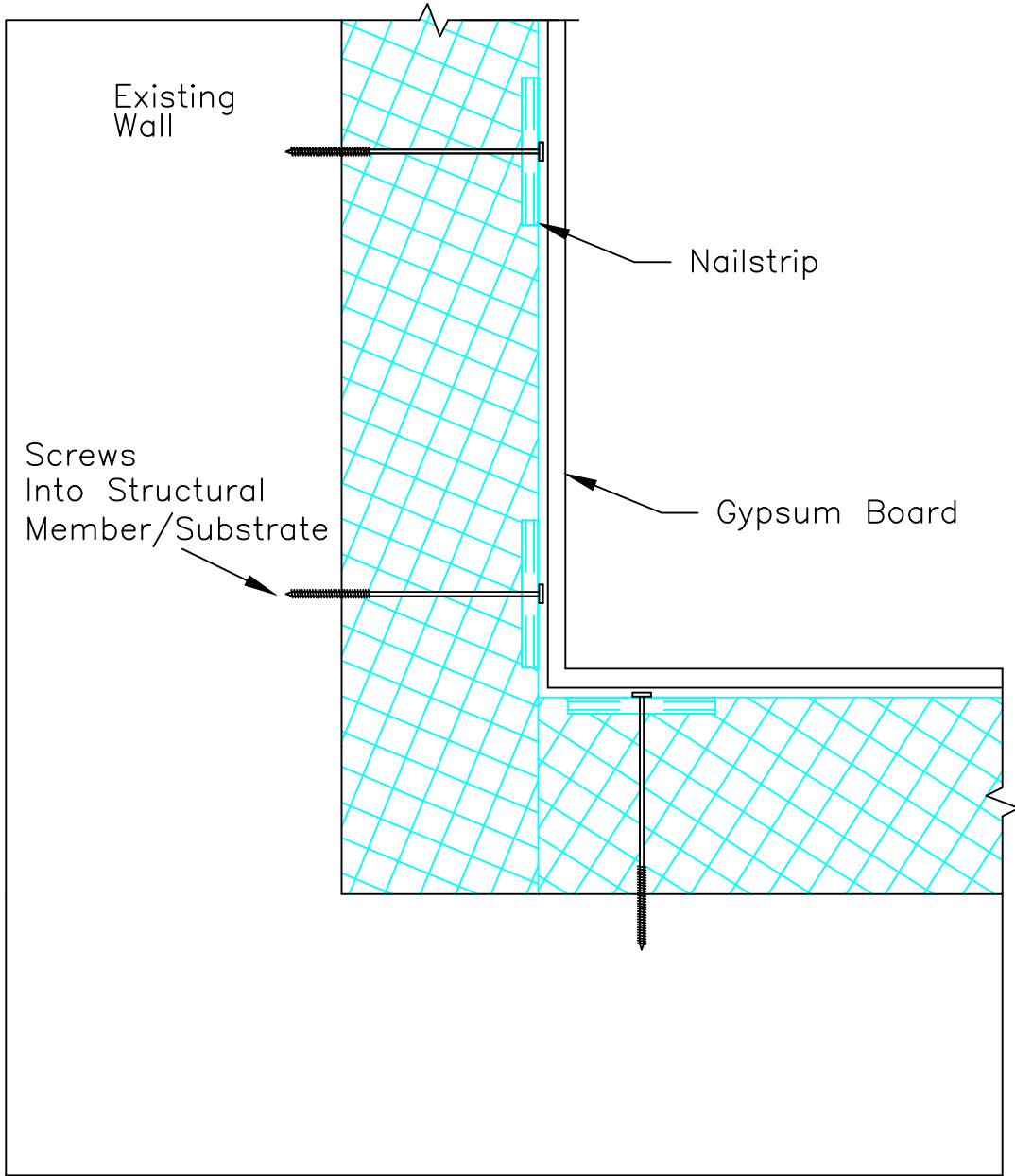
SCALE: NTS

Updated 6-1-20

Nailstrip

TITLE:
INTERIOR OUTSIDE CORNER

NO.
NS-407a



SECTION

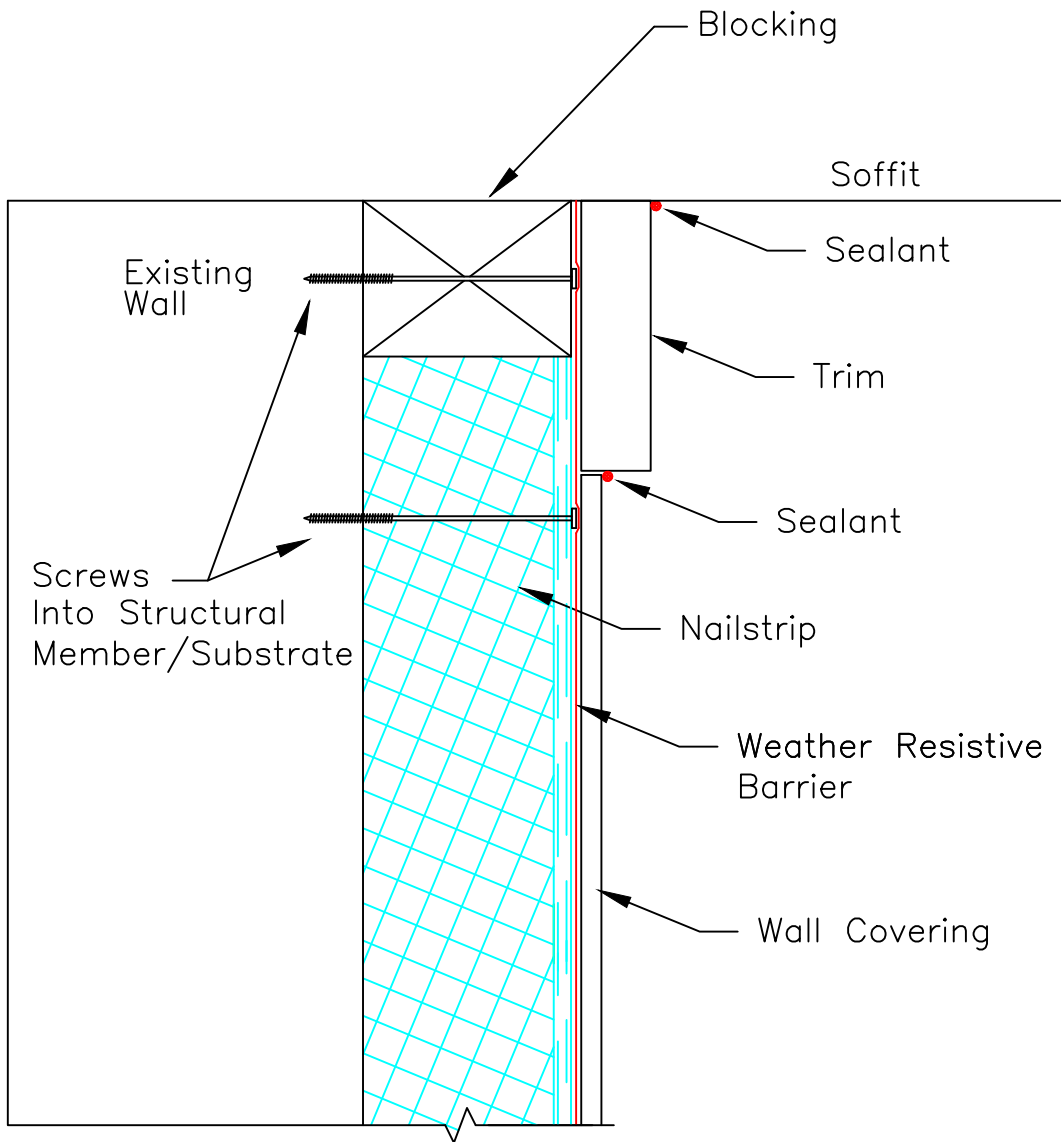
SCALE: NTS

Updated 6-1-20

Nailstrip

TITLE:
INTERIOR INSIDE CORNER

NO.
NS-408



SECTION

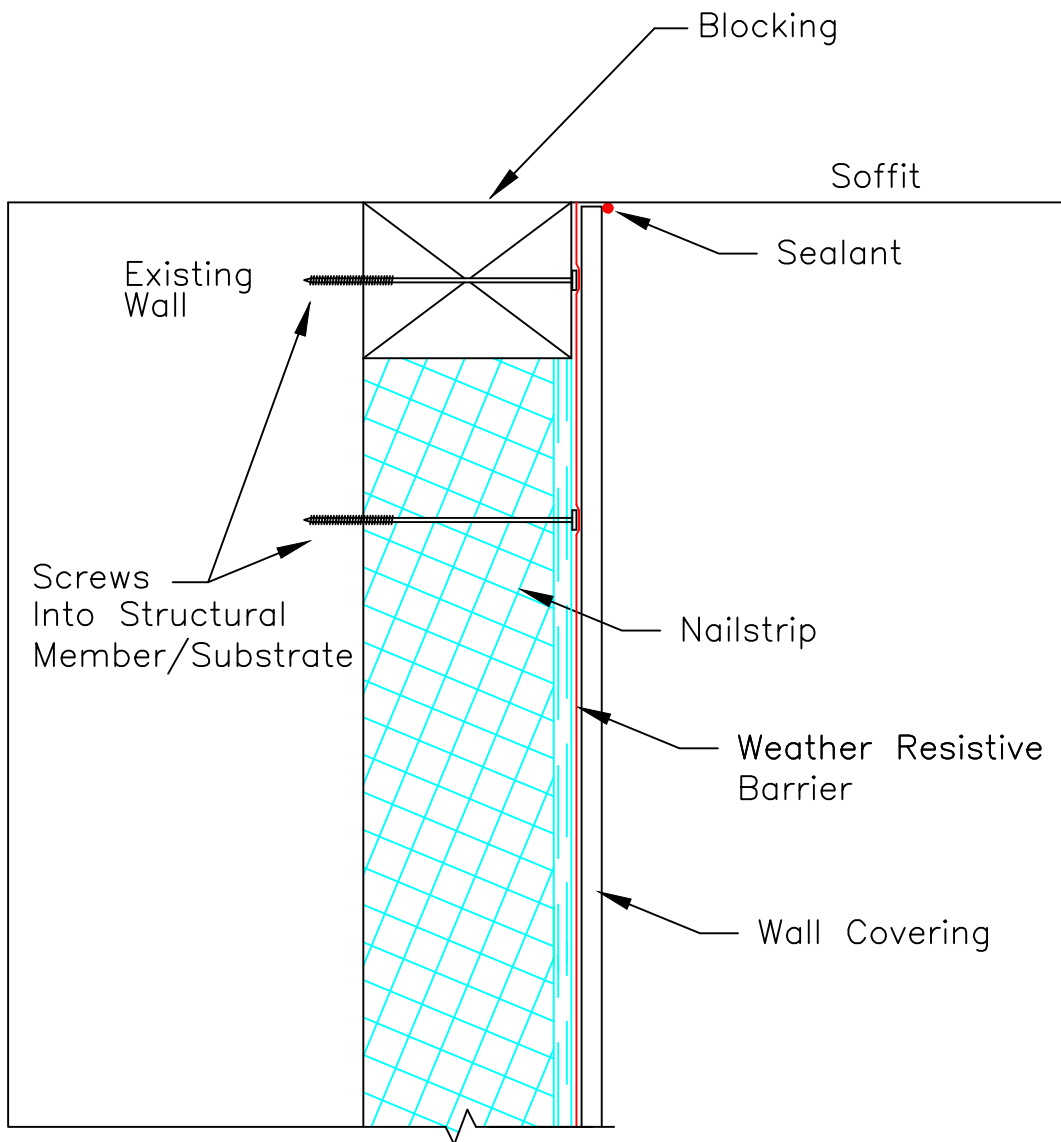
SCALE: NTS

Updated 6-1-20

Nailstrip

TITLE:
EXTERIOR TOP OF WALL

NO.
NS-502



SECTION

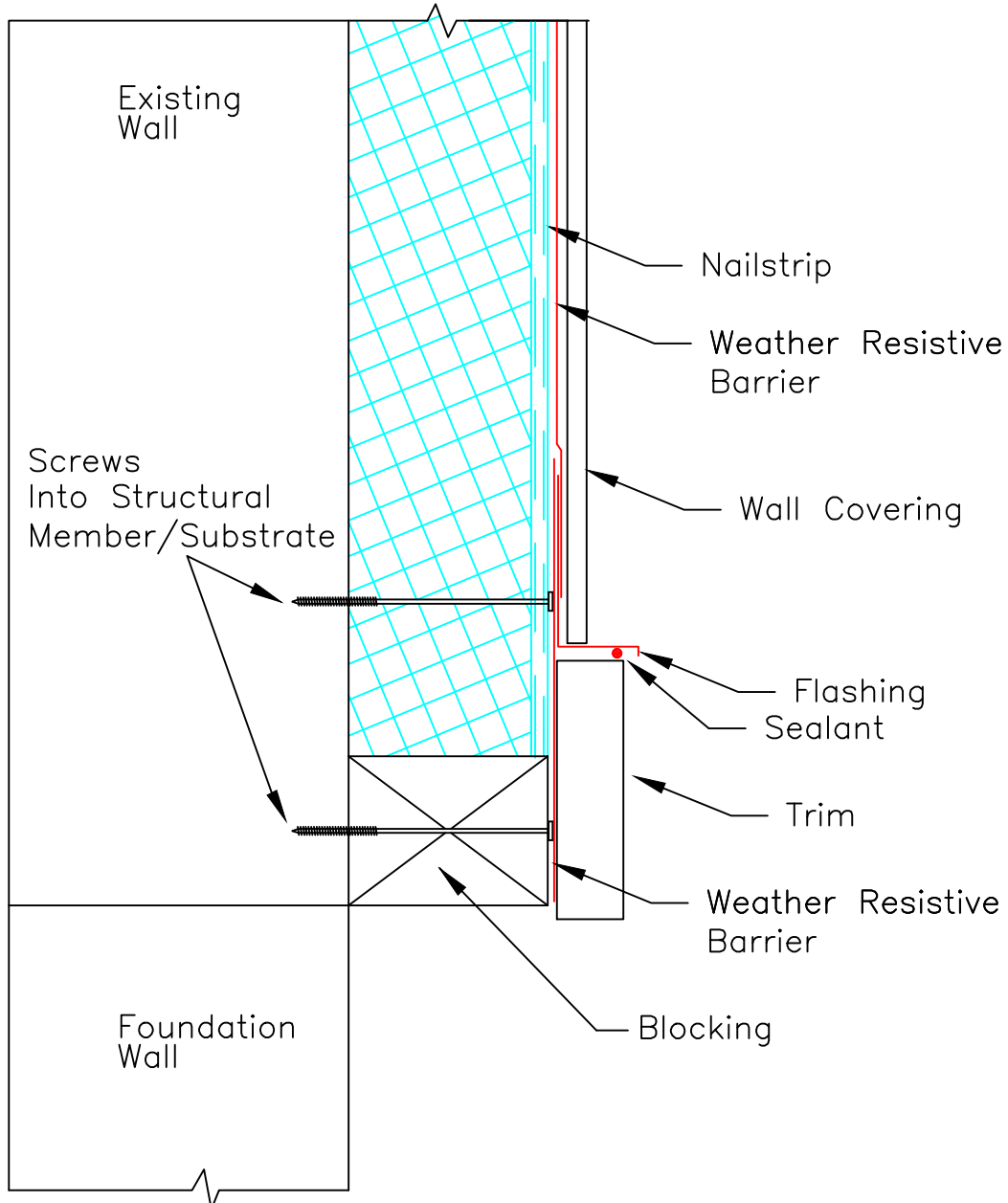
SCALE: NTS

Updated 6-1-20

Nailstrip

TITLE:
EXTERIOR TOP OF WALL

NO.
NS-502a



SECTION

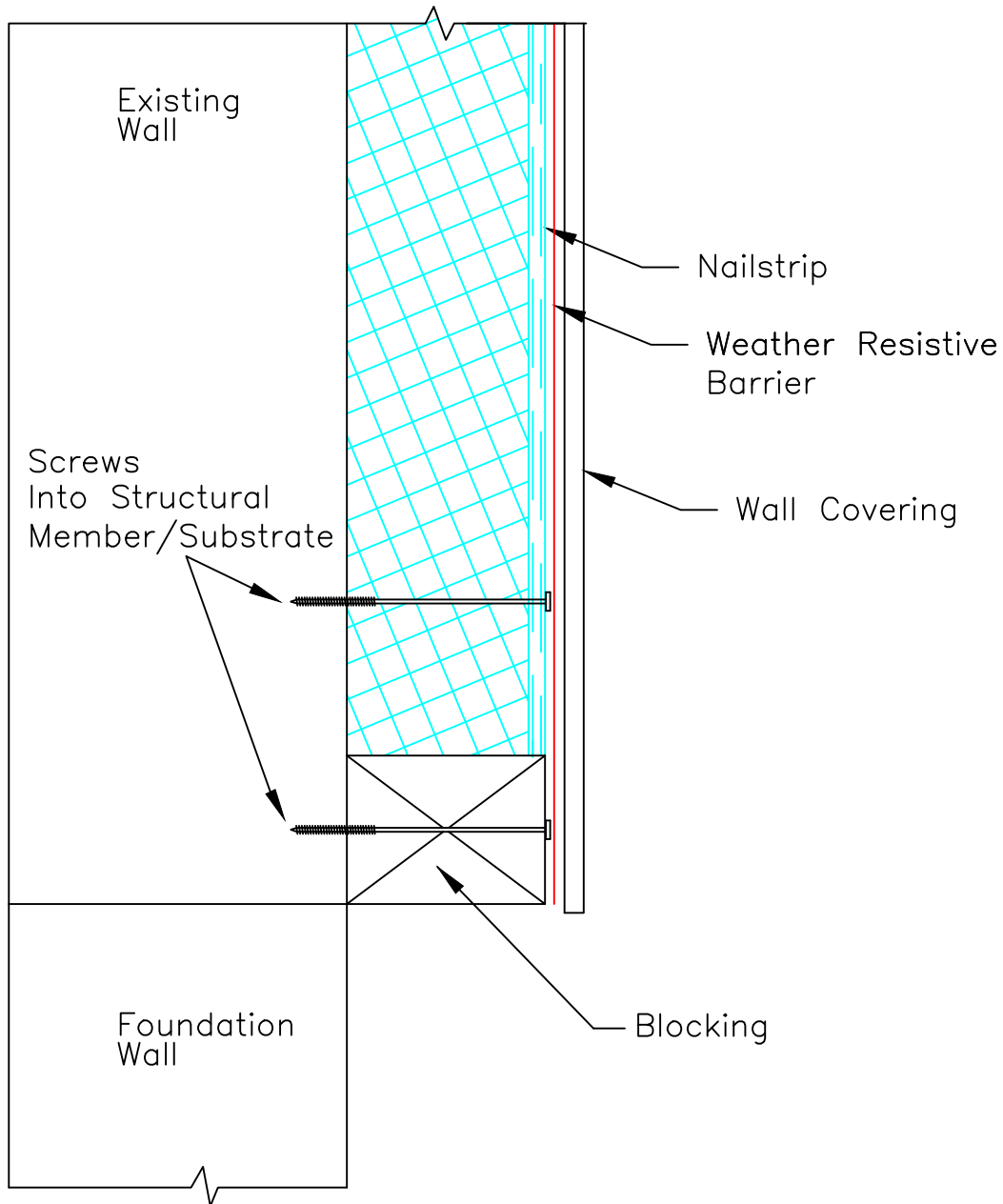
SCALE: NTS

Updated 6-1-20

Nailstrip

TITLE:
EXTERIOR BOTTOM OF WALL

NO.
NS-503



SECTION

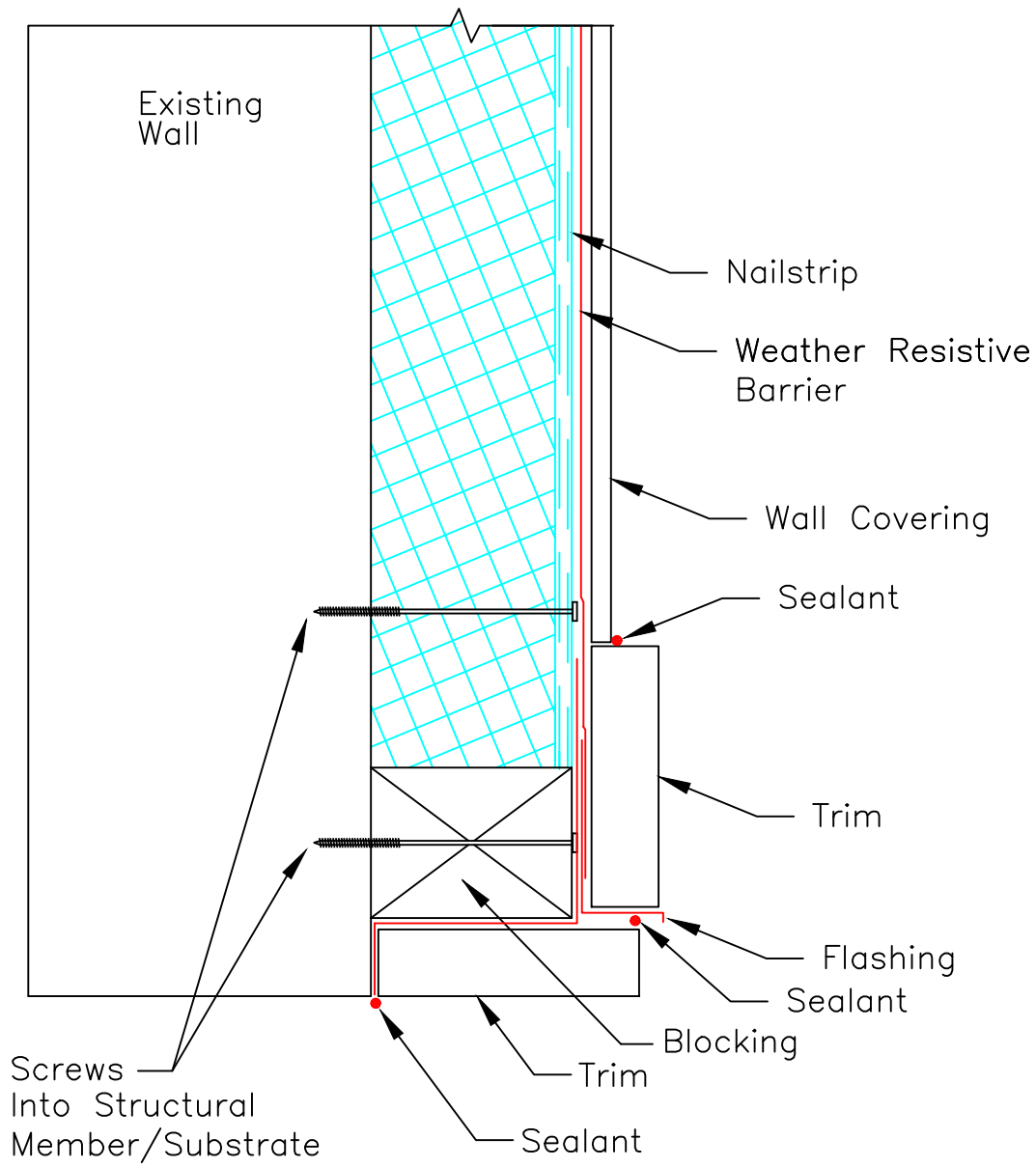
SCALE: NTS

Updated 6-1-20

Nailstrip

TITLE:
EXTERIOR BOTTOM OF WALL

NO.
NS-503a



SECTION

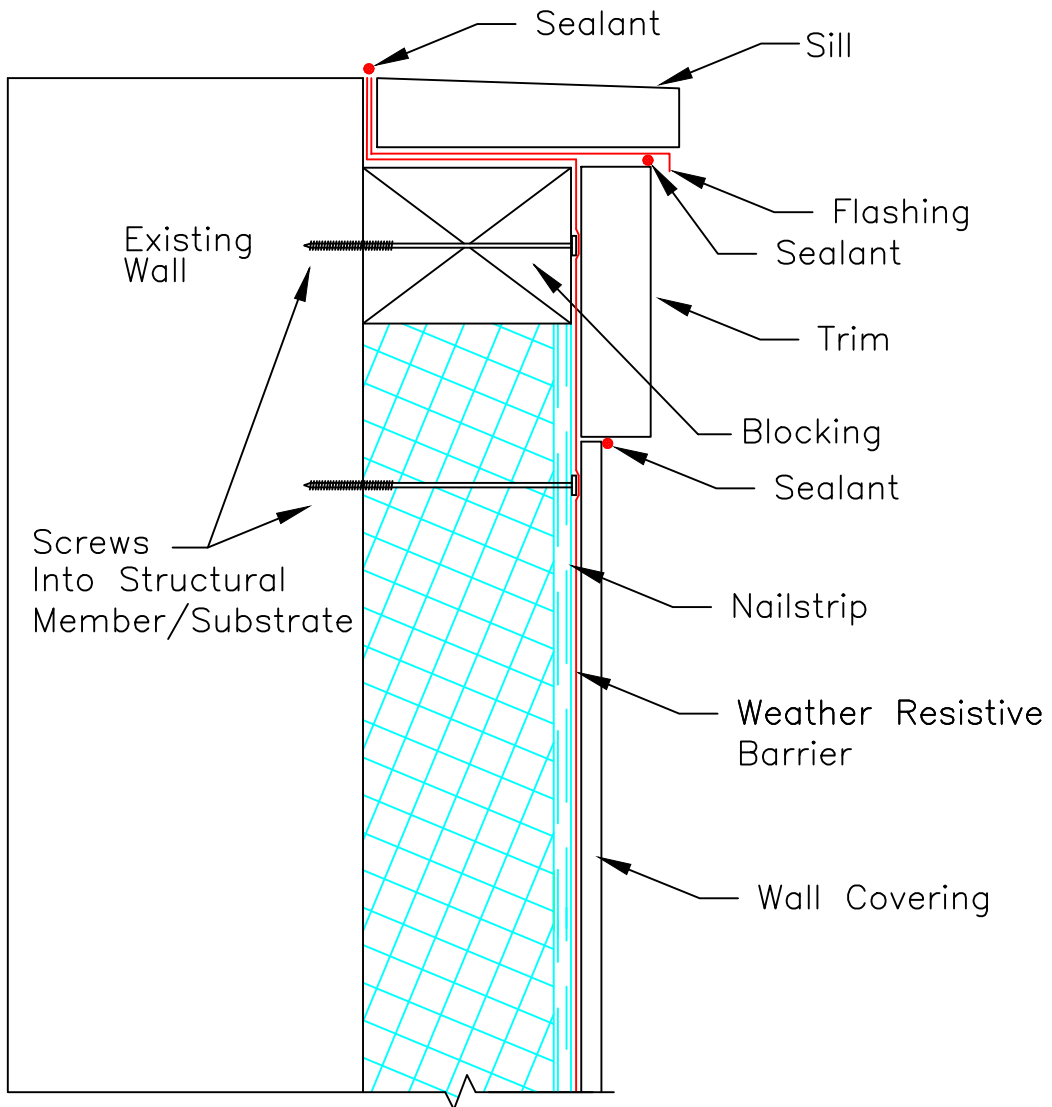
SCALE: NTS

Updated 6-1-20

Nailstrip

TITLE:
EXTERIOR OPENING HEADER

NO.
NS-504



SECTION

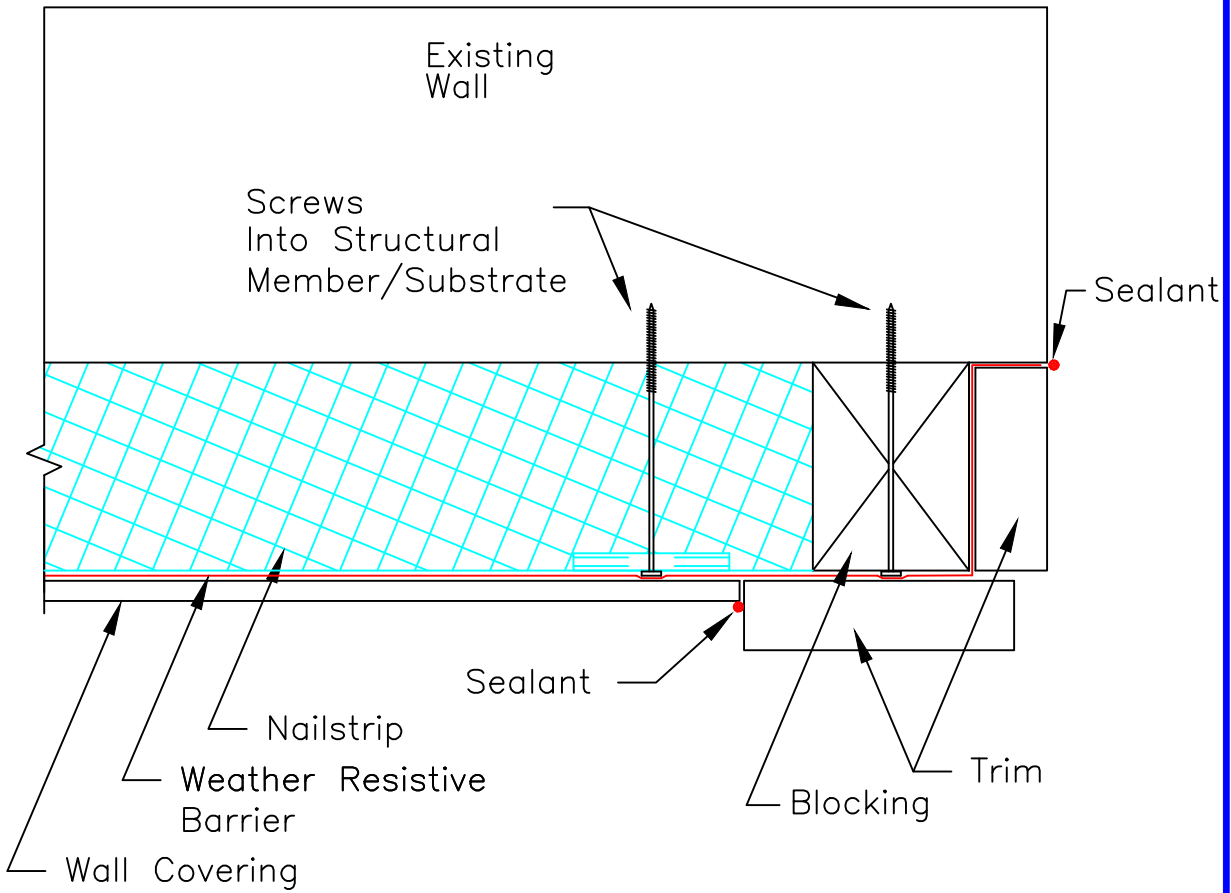
SCALE: NTS

Updated 6-1-20

Nailstrip

TITLE:
EXTERIOR OPENING SILL

NO.
NS-505



SECTION

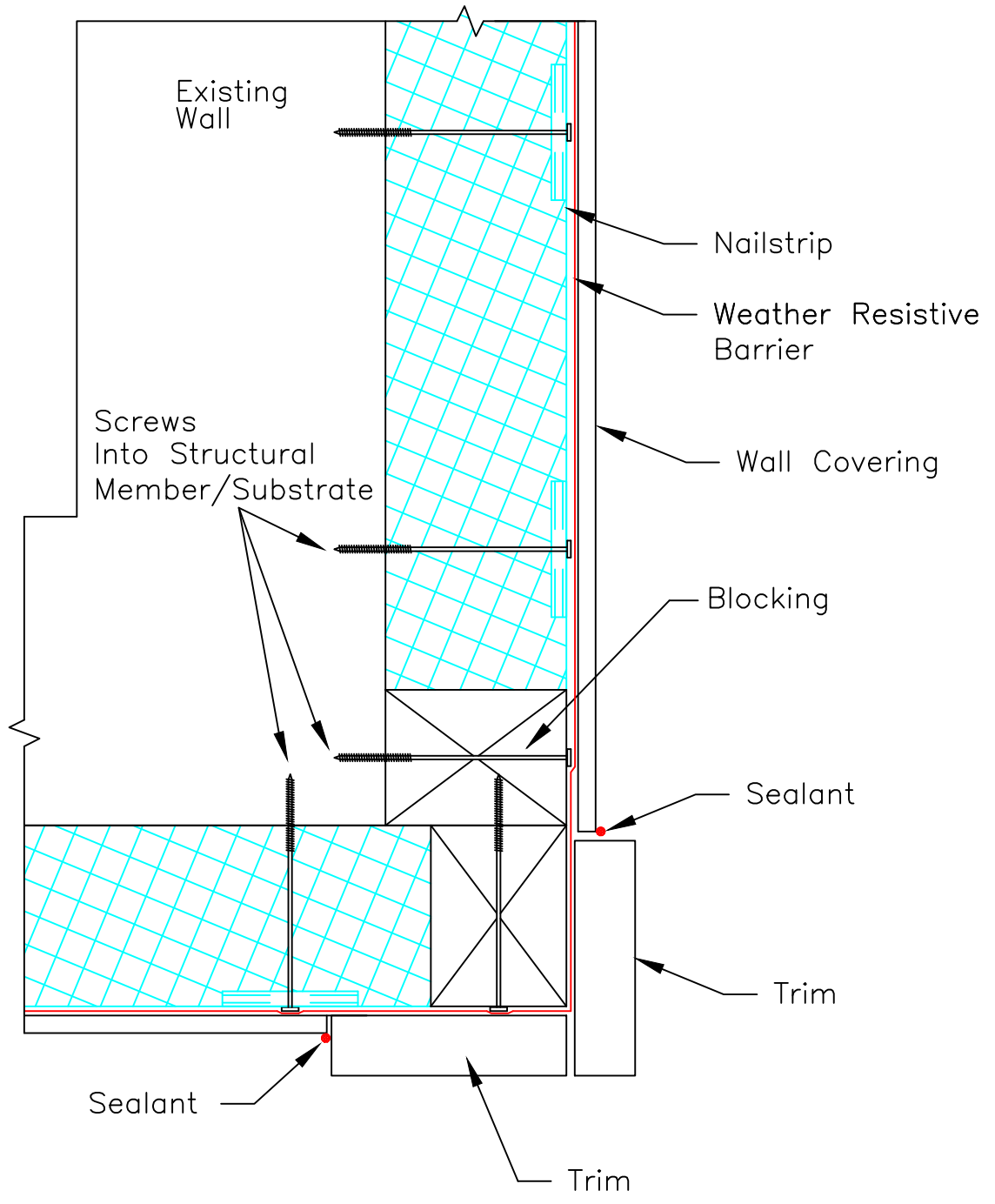
SCALE: NTS

Updated 6-1-20

Nailstrip

TITLE:
EXTERIOR OPENING JAMB

NO.
NS-506



SECTION

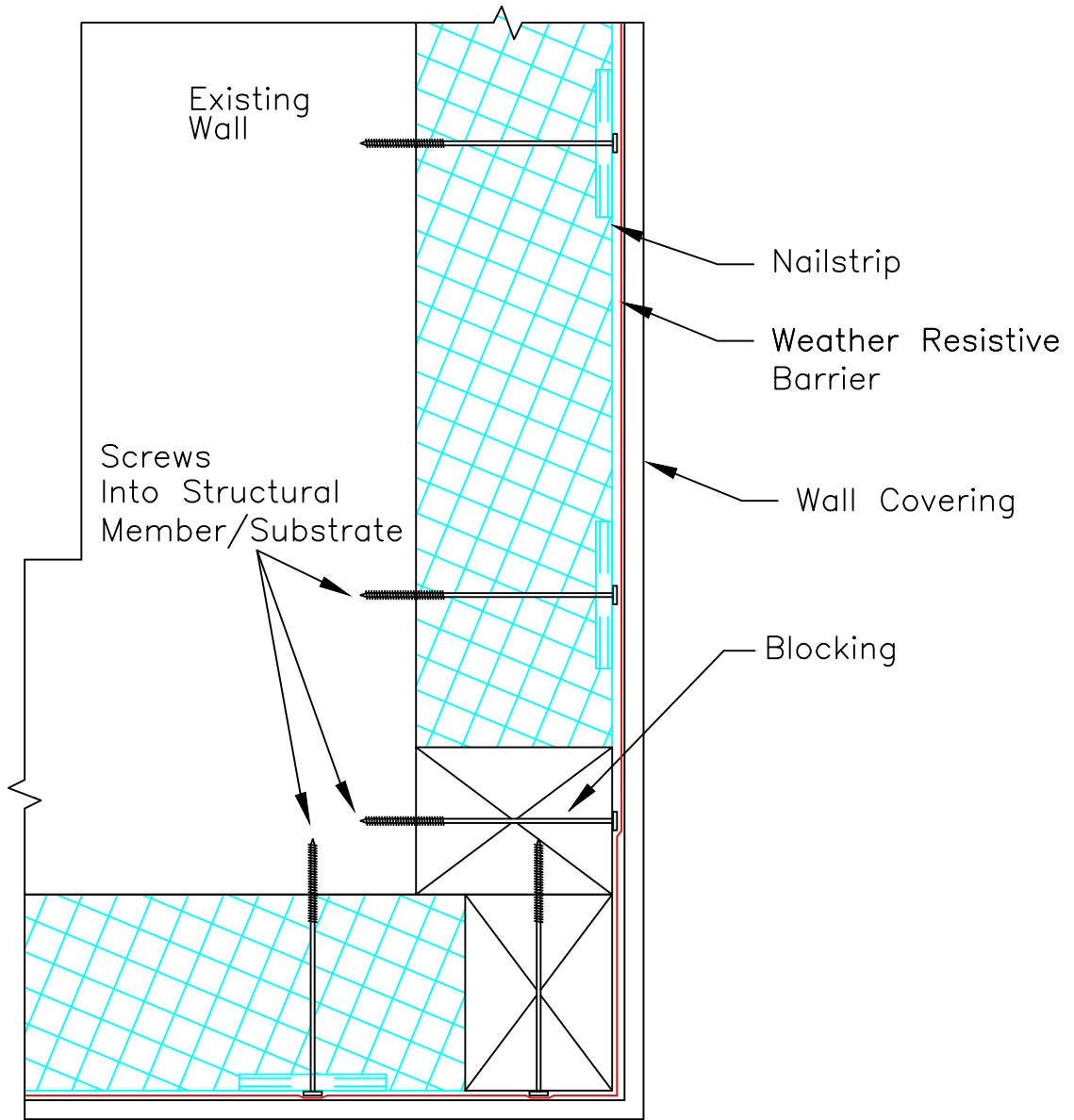
SCALE: NTS

Updated 6-1-20

Nailstrip

TITLE:
EXTERIOR OUTSIDE CORNER

NO.
NS-507



SECTION

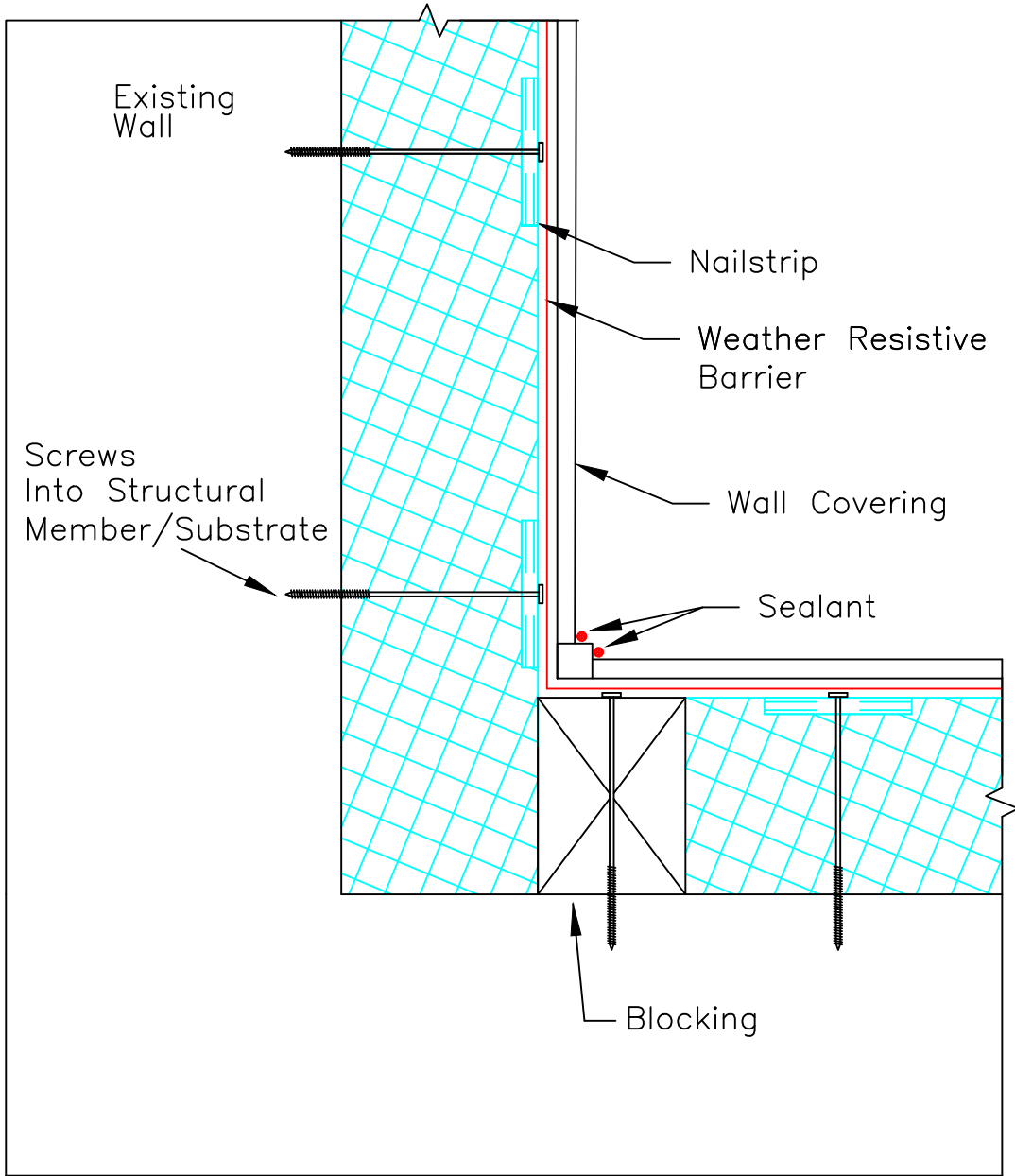
SCALE: NTS

Updated 6-1-20

Nailstrip

TITLE:
EXTERIOR OUTSIDE CORNER

NO.
NS-507a



SECTION

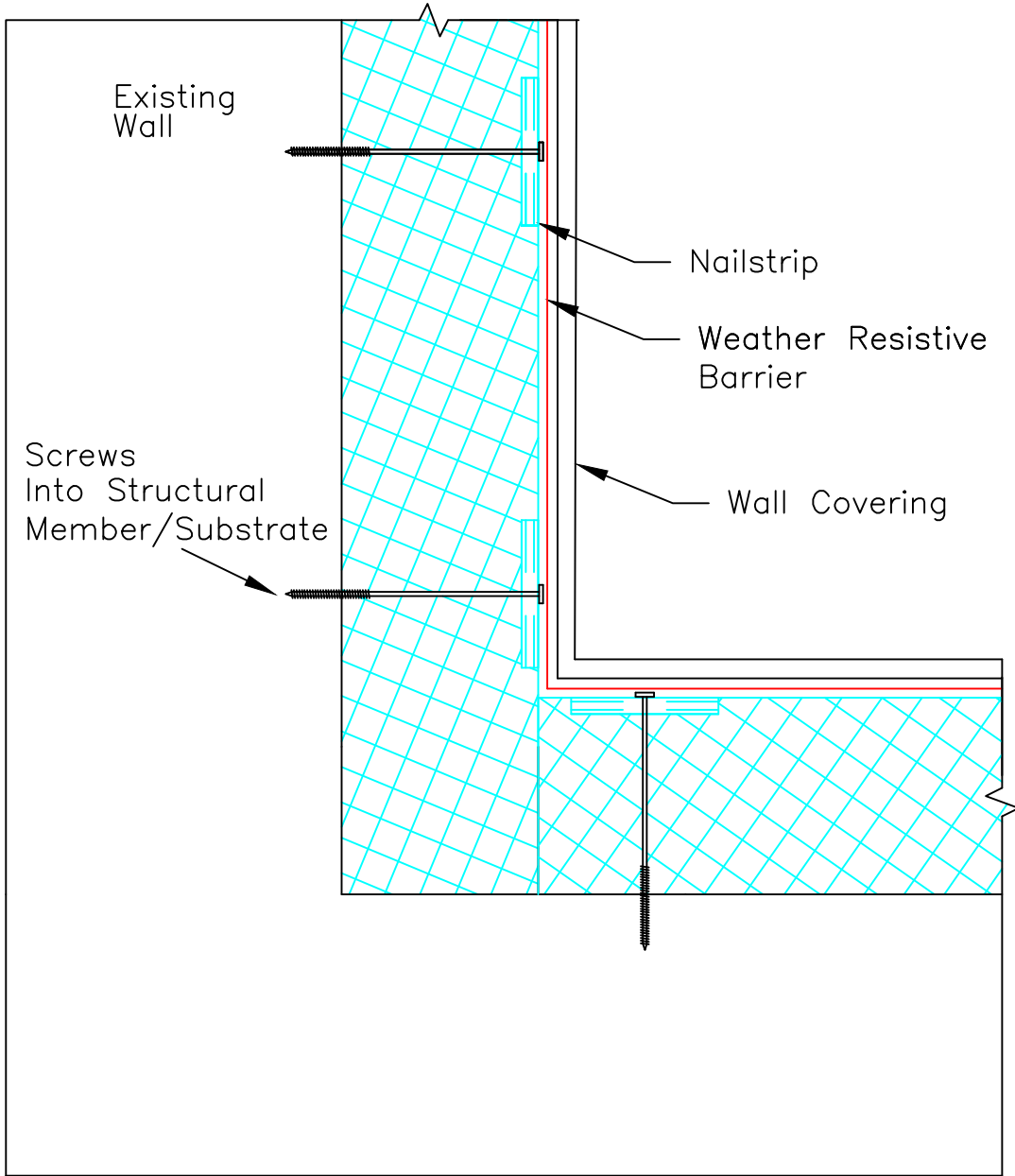
SCALE: NTS

Updated 6-1-20

Nailstrip

TITLE:
EXTERIOR INSIDE CORNER

NO.
NS-508



SECTION

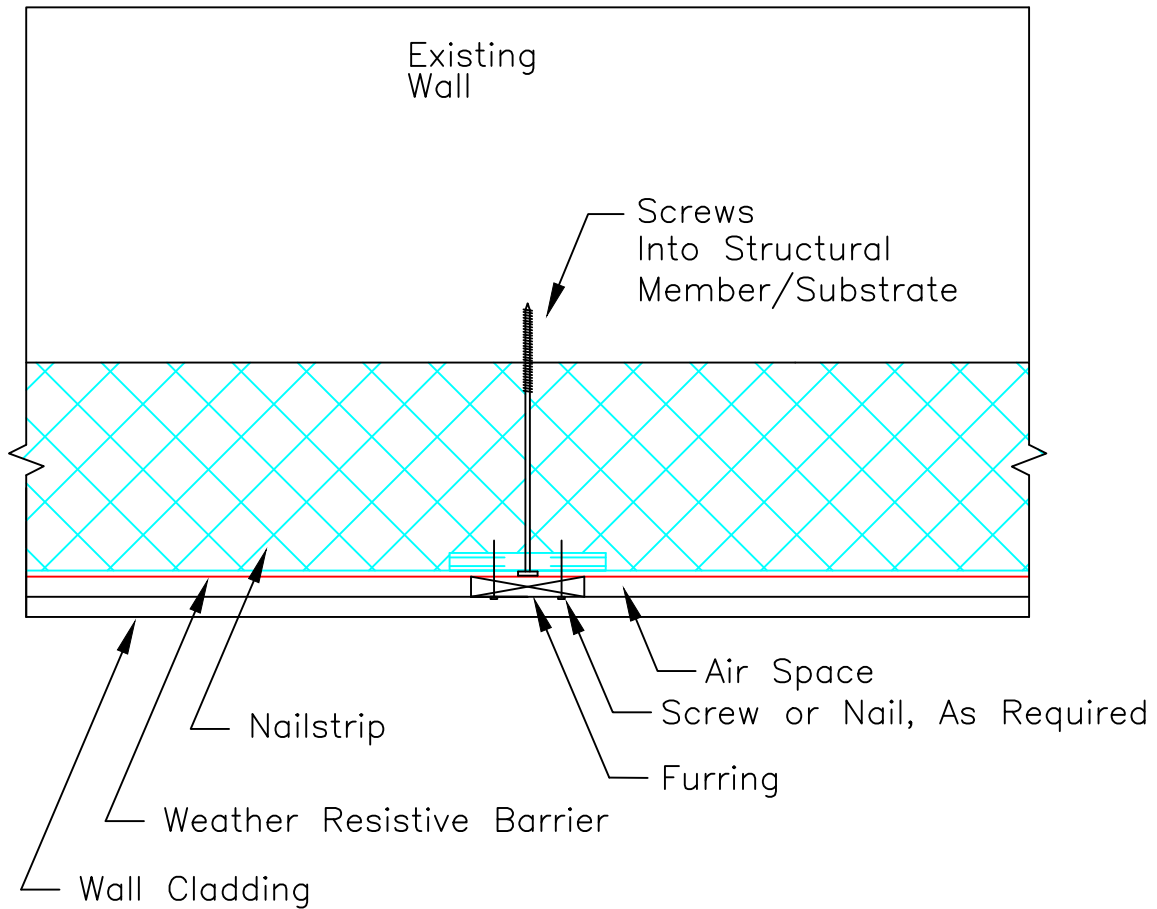
SCALE: NTS

Updated 6-1-20

Nailstrip

TITLE:
EXTERIOR INSIDE CORNER

NO.
NS-508a



SECTION

SCALE: NTS

Updated 6-1-20

Nailstrip

TITLE:
Rainscreen

NO.
NS-600

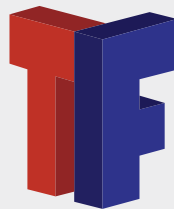
Product Availability and Support.

R-Control Nailstrip is supported by a team of experts who work with you to answer your questions, offer solutions, and do everything they can to make sure your project goes smoothly and ends successfully.

Ready to take control? Start here.

If you're ready to have R-Control Nailstrip contribute to your next project, just contact your ThermaFoam Technical Sales Representative. We will be happy to give you design consultation, information about R-Control Nailstrip products, pricing, and answers to all of your questions.

NEED INFORMATION OR A QUOTE



sales@thermafoam.com
www.thermafoam.com



1240 Hwy 77
Hillsboro, TX 76645

Office: 254-582-2730
Fax: 254-582-2811