


# Nailstrip

## A one-step insulation and nailable surface.

ThermaFoam R-Control Nailstrip consists of factory installed furring strips and UL Classified ThermaFoam R-Control insulation rigid insulation. It is an ideal insulation and nailable surface when applied over structurally sound walls such as poured concrete, concrete block, brick, wood, and steel framing. Stability makes ThermaFoam R-Control Nailstrip perfect for both interior and exterior residential and commercial wall applications.

- Saves labor with one-step installation
- Various size panels are available - 16" or 24" o.c.
- Saves energy - no thermal breaks
- Interior - eliminates labor intensive framing
- Exterior - retrofit can occur without disruption of inside living areas

## Thickness/R-value.

 Thickness	R-value <sup>1</sup>	
	75°F <sup>2</sup>	40°F <sup>3</sup>
1 1/2	5.8	6.3
2	7.7	8.3
2 1/2	9.6	10.4
3	11.6	12.5
3 1/2	13.5	14.6
4	15.4	16.7
4 1/2	17.3	18.8

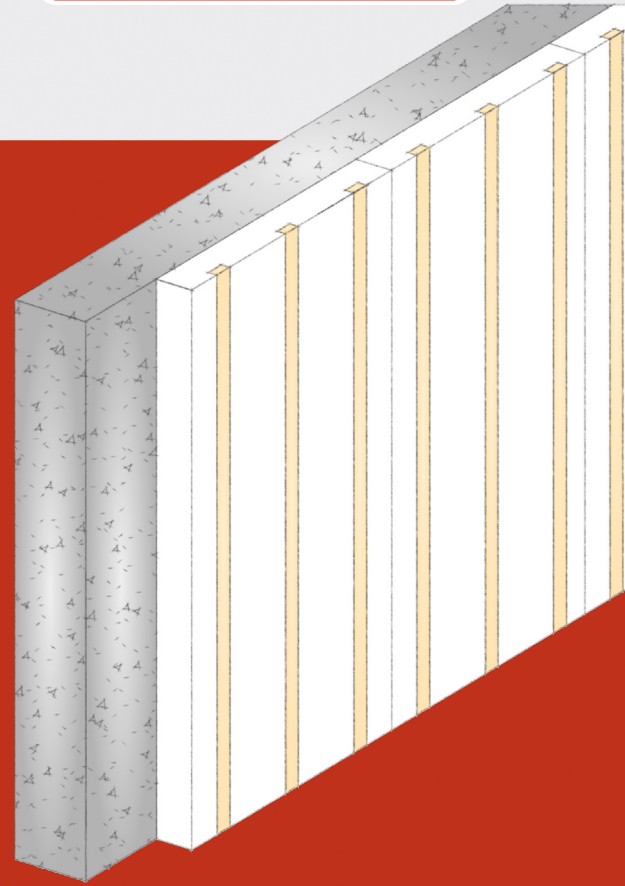
<sup>1</sup> R-value units are °F-ft<sup>2</sup>-h/Btu.

<sup>2</sup> Recommended for design in WARM climates.

<sup>3</sup> Recommended for design in COLD climates.

## Proven to meet, or exceed, building codes.

ThermaFoam R-Control is manufactured under an industry leading quality control program monitored by UL and further recognized in UL Evaluation Report UL ER40338-01. ThermaFoam R-Control meets ASTM C578, "Standard Specification for Rigid, Cellular Polystyrene Thermal Insulation".



## FOAM FACTS:

### ThermaFoam R-Control Nailstrip outperforms other products.

- Factory installed furring strips at 16" or 24" o.c.
- ThermaFoam R-Control can easily vary strength, thickness, and size to meet project R-values
- ThermaFoam R-Control is less-expensive than XPS and ISO products
- No long-term R-value loss or thermal drift
- ThermaFoam R-Control with borate treatment available to provide termite resistance

## Energy Code Ci Requirements.

The use of continuous insulation is mandated by the 2012 International Energy Conservation Code (IECC). The IECC provides a prescriptive path for wall thermal insulation that includes the use of continuous insulation.

Walls, above grade			
Zone	IECC-2012 Prescriptive Ci R-value		
	Residential	Commercial	
	Wood-Framed Wall	Wood-Framed	
		All other	Group R
1	None	R-3.8 <sup>1</sup>	R-3.8 <sup>1</sup>
2	None	R-3.8 <sup>1</sup>	R-3.8 <sup>1</sup>
3	R-5 <sup>1</sup>	R-3.8 <sup>1</sup>	R-3.8 <sup>1</sup>
4 except Marine	R-5 <sup>1</sup>	R-3.8 <sup>1</sup>	R-3.8 <sup>1</sup>
5 and 4 Marine	R-5 <sup>1</sup>	R-3.8 <sup>1</sup>	R-7.5 <sup>1</sup> R-3.8 <sup>2</sup>
6	R-10 <sup>1</sup> R-5 <sup>2</sup>	R-7.5 <sup>1</sup> R-3.8 <sup>2</sup>	R-7.5 <sup>1</sup> R-3.8 <sup>2</sup>
7	R-10 <sup>1</sup> R-5 <sup>2</sup>	R-7.5 <sup>1</sup> R-3.8 <sup>2</sup>	R-7.5 <sup>1</sup> R-3.8 <sup>2</sup>
8	R-10 <sup>1</sup> R-5 <sup>2</sup>	R-10 <sup>2</sup>	R-10 <sup>2</sup>

<sup>1</sup> For use with R-13 cavity insulation  
<sup>2</sup> For use with R-20 cavity insulation

## Installation.

Installation shall be in strict accordance with published instructions, details, and drawings that are part of the contract documents for the project.

1. ThermaFoam R-Control Nailstrip must be installed over a structurally sound substrate.

2. Mechanically fasten ThermaFoam R-Control Nailstrip with ThermaFoam R-Control Fasteners or other approved fasteners long enough to penetrate the structural substrate to provide adequate holding power.

Note: Fastener types, installation, and spacing should be designed on an individual project basis. For specific fastening recommendations, please contact a sales representative or refer to the ThermaFoam R-Control Nailstrip Construction Manual and Technical Bulletins.

3. Provide continuous wood or metal blocking at all perimeters and openings.

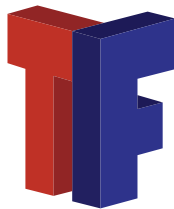
4. Install weather resistive barriers and wall cladding materials per wall cladding manufacturer's specifications and recommendations for installation over continuous insulation.

Note: Climate conditions, code requirements, and building science dictate the use and position of vapor retarders within wall assemblies. Consult with local code officials and building science professional concerning the use of vapor retarders.

## Ready to take control? Start here.

If you're ready to have ThermaFoam R-Control contribute to your next project, just contact your ThermaFoam R-Control, Inc. Technical Sales Representative. They will be happy to give you design consultation, information about ThermaFoam R-Control products, pricing, and answers to all of your questions.

**NEED INFORMATION OR A QUOTE**



**[sales@thermafoam.com](mailto:sales@thermafoam.com) | [www.thermafoam.com](http://www.thermafoam.com)**



**1240 Hwy 77  
Hillsboro, TX 76645**

**Office: 254-582-2730  
Fax: 254-582-2811**